



Designed In USA.

HEAVY DUTY SYSTEMS REFRIGERATION EQUIPMENT



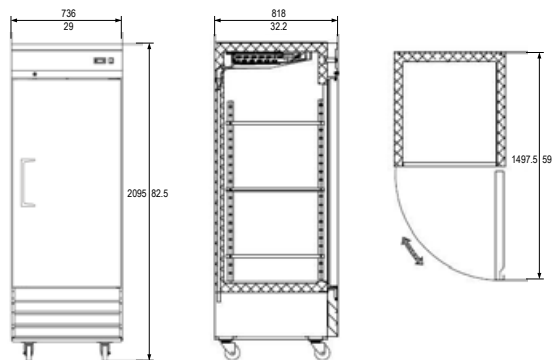
**PERFORMANCE.
DURABILITY.
VALUE.**



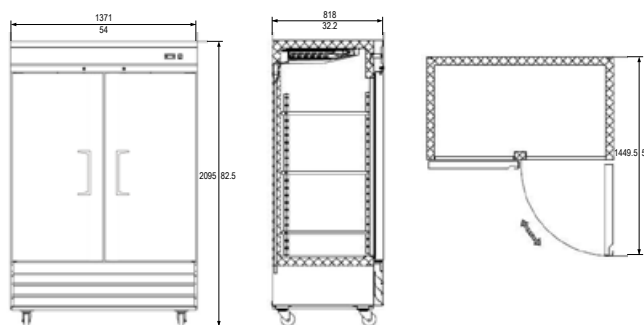
**HDSR-1S****HDSR-2S****HDSR-3S****STANDARD FEATURES**

- Stainless steel exterior, stainless steel interior, aluminum back.
- Refrigeration system keeps food at safe temperatures between 33°F and 41°F (0.5°C to 5°C).
- Self-Closing doors with 90 degree stay-open feature.
- Locks and keys included.
- Shelves: Adjustable heavy-duty PVC coated shelves.
- Preinstalled 4" heavy-duty casters with brakes.
- Electronic control system makes it easy to adjust temperature set point and defrost frequency.
- Slide out refrigeration condensing unit makes it easy to access condenser for cleaning and service.
- Option of different handles available.
- These units use HYDRO-CARBON R290 refrigerant, which is environmentally friendly and more efficient than R134a/R404a refrigerant.

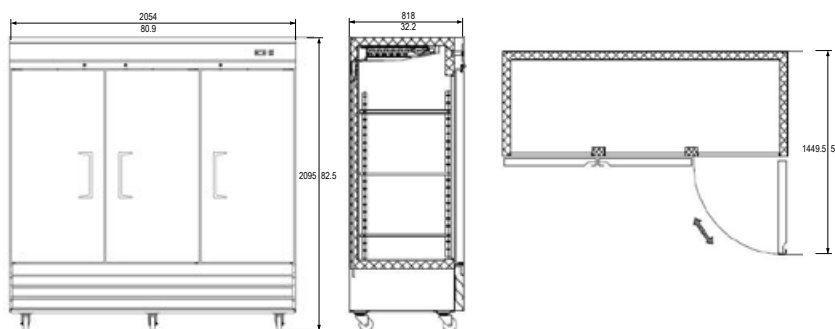
HDSR/F-1S/G



HDSR/F-2S/G



HDSR/F-3S/G

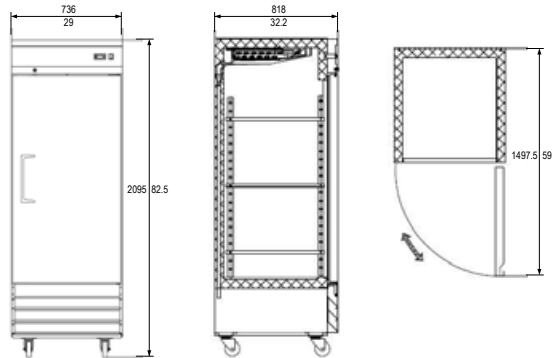


MODEL	DOORS	SHELVES	DIMENSIONS	CAPACITY	HP	AMPS	VOLTAGE	PLUG TYPE
HDSR-1S	1	3	29 x 32 1/4 x 82 1/2 in 736 x 818 x 2095 mm	23 cu.ft. 650 liters	1/5	2.6	115/60/1	NEMA 5-15P
HDSR-2S	2	6	54 x 32 1/4 x 82 1/2 in 1371 x 818 x 2095 mm	47 cu.ft. 1321 liters	1/4+	3.8	115/60/1	NEMA 5-15P
HDSR-3S	3	9	80 9/10 x 32 1/4 x 82 1/2 in 2054 x 818 x 2095 mm	23 cu.ft. 2040 liters	3/4+	9	115/60/1	NEMA 5-15P

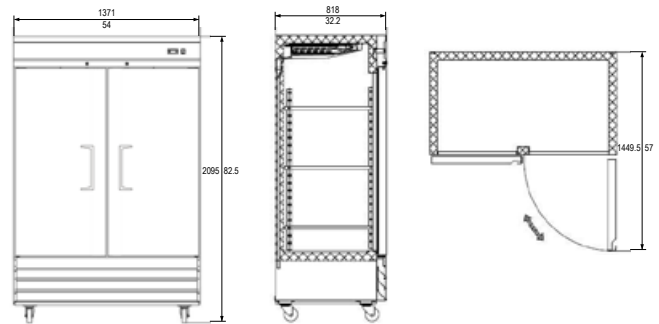
**HDSF-1S****HDSF-2S****HDSF-3S****STANDARD FEATURES**

- Stainless steel exterior, stainless steel interior, aluminum back.
- Refrigeration system keeps food at safe temperatures between -8°F and 0°F (-22 °C to -18 °C).
- Self-Closing doors with 90 degree stay-open feature. Locks and keys included.
- Shelves: Adjustable heavy-duty PVC coated shelves.
- Preinstalled 4" heavy-duty casters with brakes.
- Electronic control system makes it easy to adjust temperature set point and defrost frequency.
- Slide out refrigeration condensing unit makes it easy to access condenser for cleaning and service.
- Option of different handles available.
- These units use HYDRO-CARBON R290 refrigerant, which is environmentally friendly and more efficient than R134a/R404a refrigerant.

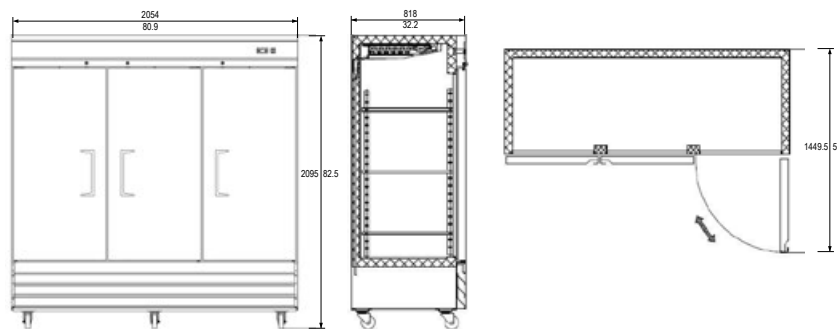
HDSR/F-1S/G



HDSR/F-2S/G



HDSR/F-3S/G



MODEL	DOORS	SHELVES	DIMENSIONS	CAPACITY	HP	AMPS	VOLTAGE	PLUG TYPE
HDSF-1S	1	3	29 x 32 1/4 x 82 1/2 in 736 x 818 x 2095 mm	23 cu.ft. 650 liters	1/2+	7.1	115/60/1	NEMA 5-15P
HDSF-2S	2	6	54 x 32 1/4 x 82 1/2 in 1371 x 818 x 2095 mm	47 cu.ft. 1321 liters	1	10.7	115/60/1	NEMA 5-15P
HDSF-3S	3	9	80 9/10 x 32 1/4 x 82 1/2 in 2054 x 818 x 2095 mm	23 cu.ft. 2040 liters	1 1/4	12	115/60/1	NEMA 5-15P

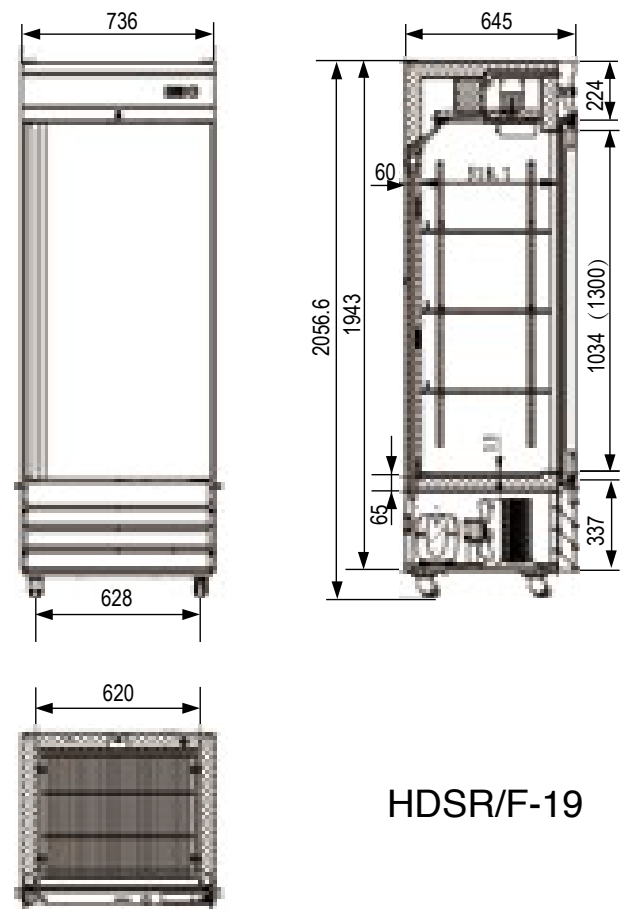
**HDSR/F-19****STANDARD FEATURES**

- Stainless steel exterior, stainless steel interior, aluminum back.
- Refrigeration system keeps food at safe temperatures:

HDSR-19—between 33°F and 41°F (0.5°C to 5°C)

HDSF-19 —between -8°F and 0°F (-17°C to -22°C)

- Self-Closing doors with 90 degree stay-open feature.
- Locks and keys included.
- Shelves: Adjustable heavy PVC coated shelves.
- Preinstalled 4" heavy-duty casters with brakes.
- Electronic control system makes it easy to adjust temperature set point and defrost frequency.
- Slide out refrigeration condensing unit makes it easy to access condenser for cleaning and service.
- These units use HYDRO-CARBON R290 refrigerant, which is environmentally friendly and more efficient than R134a/R404a refrigerant.



HDSR/F-19

MODEL	TEMP	SHELVES	DIMENSIONS	CAPACITY	HP	AMPS	VOLTAGE	PLUG TYPE
HDSR-19	33oF ~ 41oF	3	29 x 25 1/5 x 82 1/2 in 736 x 648 x 2095 mm	19 cu.ft. 538 liters	1/5	2.8	115/60/1	NEMA 5-15P
HDSF-19	-8oF ~ 0oF	3	29 x 25 1/5 x 82 1/2 in 736 x 648 x 2095 mm	19 cu.ft. 538 liters	1/2+	8.28	115/60/1	NEMA 5-15P

sales@heavydutysystems.com

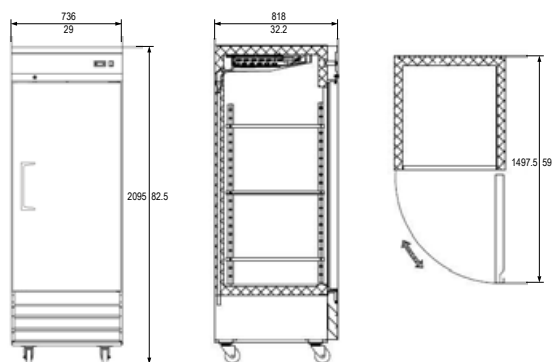
Voltage 220/50/1 available.



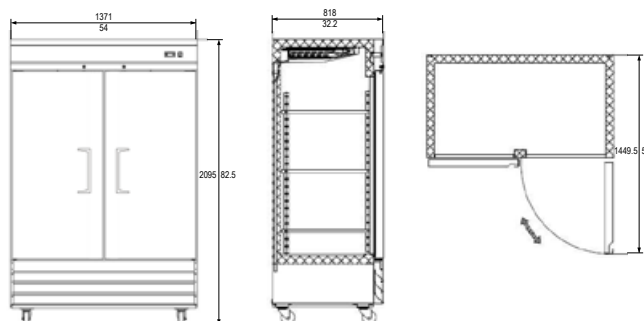
**HDSR-1G****HDSR-2G****HDSR-3G****STANDARD FEATURES**

- Stainless steel exterior, stainless steel interior, aluminum back.
- Refrigeration system keeps food at safe temperatures between 33°F and 41°F (0.5°C to 5°C).
- Self-Closing glass doors with locks and keys.
- Shelves: Adjustable heavy-duty PVC coated shelves.
- Preinstalled 4" heavy-duty casters with brakes.
- Electronic control system makes it easy to adjust temperature set point and defrost frequency.
- Slide out refrigeration condensing unit makes it easy to access condenser for cleaning and service.
- Option of different handles available.
- These units use HYDRO-CARBON R290 refrigerant, which is environmentally friendly and more efficient than R134a/R404a refrigerant.

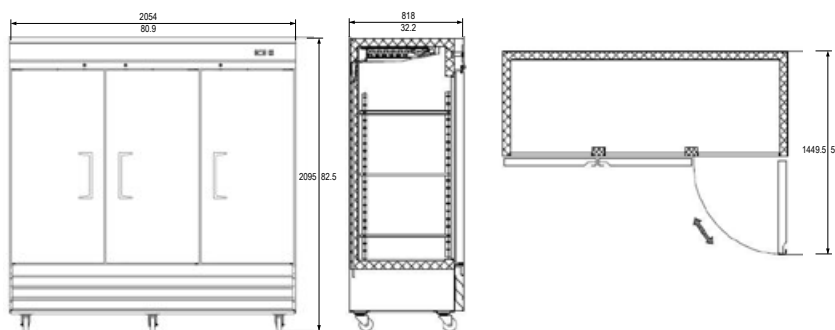
HDSR/F-1S/G



HDSR/F-2S/G



HDSR/F-3S/G



MODEL	DOORS	SHELVES	DIMENSIONS	CAPACITY	HP	AMPS	VOLTAGE	PLUG TYPE
HDSR-1G	1	3	29 x 32 1/4 x 82 1/2 in 736 x 818 x 2095 mm	23 cu.ft. 650 liters	1/5	2.6	115/60/1	NEMA 5-15P
HDSR-2G	2	6	54 x 32 1/4 x 82 1/2 in 1371 x 818 x 2095 mm	47 cu.ft. 1321 liters	1/4+	4.3	115/60/1	NEMA 5-15P
HDSR-3G	3	9	80 9/10 x 32 1/4 x 82 1/2 in 2054 x 818 x 2095 mm	23 cu.ft. 2040 liters	3/4+	9.1	115/60/1	NEMA 5-15P

sales@heavydutysystems.com

Voltage 220/50/1 available.

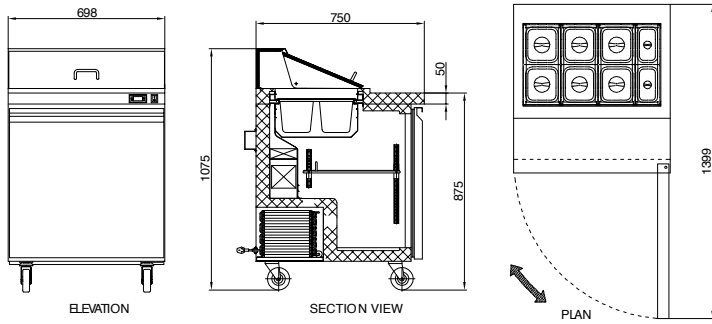


Designed In USA.

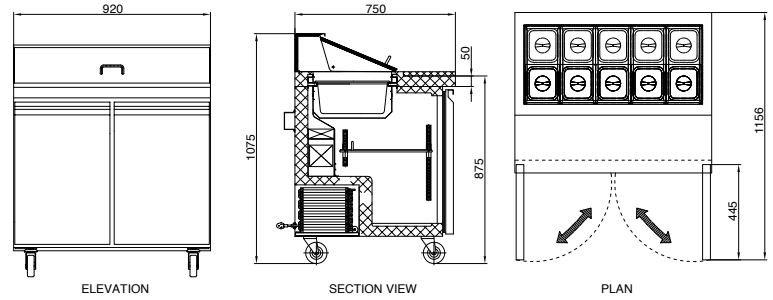
PERFORMANCE. DURABILITY. VALUE.

**HDSSP-1S-28-8****HDSSP-2S-36-10****HDSSP-2S-47-12****HDSSP-2S-60-16****HDSSP-3S-70-18****STANDARD FEATURES**

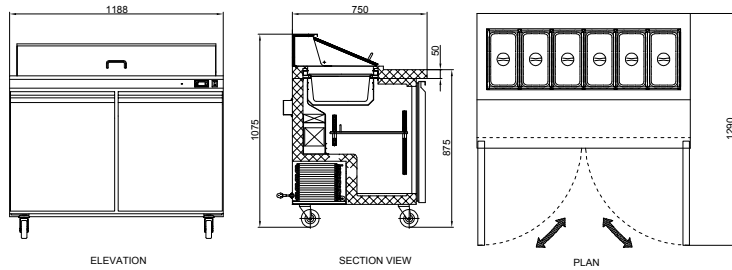
- Stainless steel exterior, stainless steel interior, aluminum back.
- Refrigeration system keeps food at safe temperatures between 33°F and 41°F (0.5°C to 5°C).
- Self-Closing doors with 90 degree stay-open feature.
- Shelves: Adjustable heavy-duty PVC coated shelves.
- Preinstalled 4" heavy-duty casters with brakes.
- Option of different handles available.
- Electronic control system makes it easy to adjust temperature set point and defrost frequency.
- Slide out refrigeration condensing unit makes it easy to access condenser for cleaning and service.
- Cutting board thickness:
 - 20MM – Exterior/Interior SS304 or Exterior SS430/Interior SS304
 - 15MM- Exterior SS430/Interior painted aluminum
- Polycarbonate pans (per pan layout) included standard
- These units use HYDRO-CARBON R290 refrigerant, which is environmentally friendly and more efficient than R134a/R404a refrigerant.



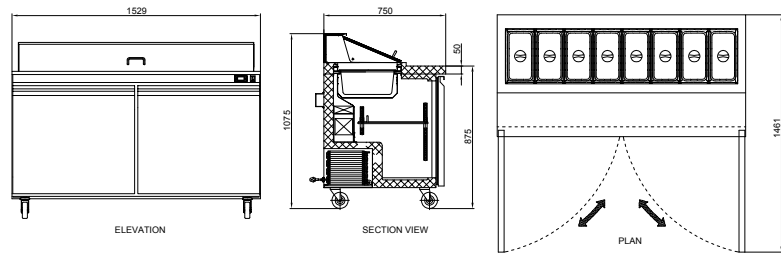
HDSSP-1S-28-8



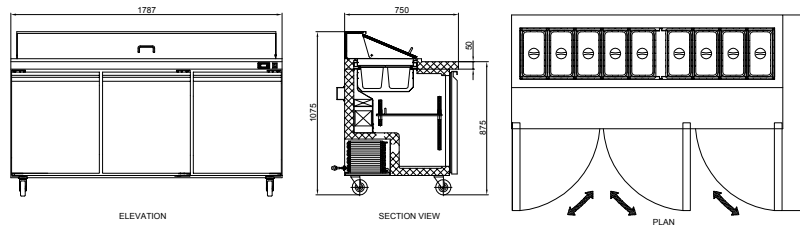
HDSSP-2S-36-10



HDSSP-2S-47-12



HDSSP-2S-60-16



HDSSP-3S-70-18

MODEL	DOORS	SHELVES	PAN LAYOUT	DIMENSIONS	CAPACITY	HP	AMPS	VOLTAGE	PLUG TYPE
HDSSP- 1S-28-8	1	1	6x1/6 + 2x1/9	27 1/2 x 29 1/2 x 42 3/8 in 698 x 750 x 1075 mm	5.7 cu.ft. 160 liters	1/5	2.88	115/60/1	NEMA 5-15P
HDSSP- 2S-36-10	2	2	10x1/6	36 1/4 x 29 1/2 x 42 3/8 in 920 x 750 x 1075 mm	7.6 cu.ft. 213 liters	1/5	3.24	115/60/1	NEMA 5-15P
HDSSP- 2S-47-12	2	2	12x1/6	46 7/8 x 29 1/2 x 42 3/8 in 1188 x 750 x 1075 mm	9.5 cu.ft. 268 liters	1/4+	4.56	115/60/1	NEMA 5-15P
HDSSP-2S-60-16	2	2	16x1/6	60 1/5 x 29 1/2 x 42 3/8 in 1529 x 750 x 1075 mm	15 cu.ft. 428 liters	1/4+	4.8	115/60/1	NEMA 5-15P
HDSSP-3S-70-18	3	3	18X1/6	70 2/5 x 29 1/2 x 42 3/8 in 1787 x 750 x 1075 mm	15.5 cu.ft. 440 liters	3/4	8.9	115/60/1	NEMA 5-15P



HDSSPM-1S-28-12



HDSSPM-2S-36-15



HDSSPM-2S-47-18



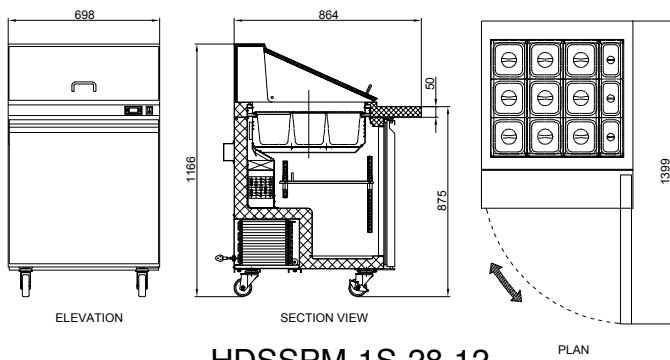
HDSSPM-2S-60-24



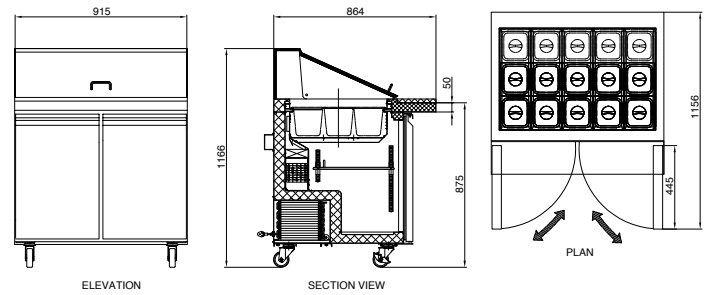
HDSSPM-3S-70-30

STANDARD FEATURES

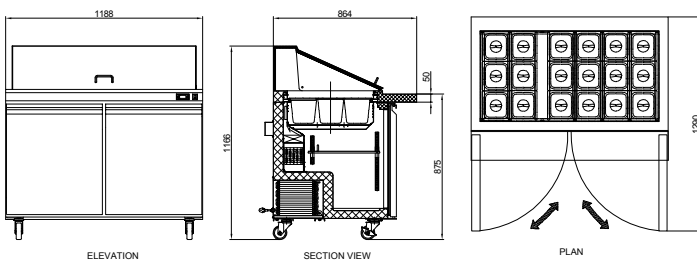
- Stainless steel exterior, stainless steel interior, aluminum back.
- Refrigeration system keeps food at safe temperatures between 33°F and 41°F (0.5°C to 5°C).
- Self-Closing doors with 90 degree stay-open feature.
- Shelves: Adjustable heavy-duty PVC coated shelves.
- Preinstalled 4" heavy-duty casters with brakes.
- Option of different handles available.
- Electronic control system makes it easy to adjust temperature set point and defrost frequency.
- Slide out refrigeration condensing unit makes it easy to access condenser for cleaning and service.
- Cutting board thickness:
 - 20MM – Exterior/Interior SS304 or Exterior SS430/Interior SS304
 - 15MM- Exterior SS430/Interior painted aluminum
- Polycarbonate pans (per pan layout) included standard
- These units use HYDRO-CARBON R290 refrigerant, which is environmentally friendly and more efficient than R134a/R404a refrigerant.



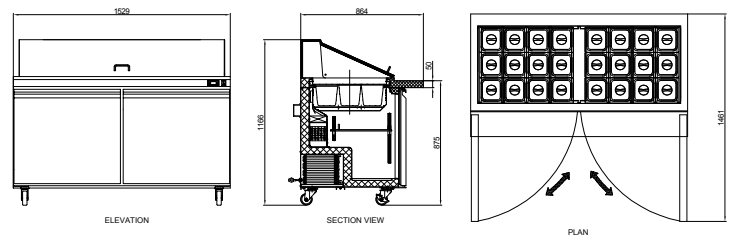
HDSSPM-1S-28-12



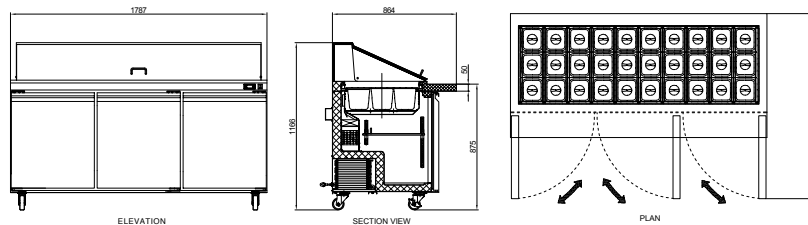
HDSSPM-2S-36-15



HDSSPM-2S-47-18



HDSSPM-2S-60-24



HDSSPM-3S-70-30

MODEL	DOORS	SHELVES	PAN LAYOUT	DIMENSIONS	CAPACITY	HP	AMPS	VOLTAGE	PLUG TYPE
HDSSPM-1S-28-12	1	1	9x1/6 + 3x1/9	27 1/2 x 34 x 45 9/10 in 698 x 864 x 1166 mm	5.7 cu.ft. 160 liters	1/5	2.88	115/60/1	NEMA 5-15P
HDSSPM- 2S-36-15	2	2	15x1/6	36 1/4 x 34 x 45 9/10 in 920 x 864 x 1166 mm	7.6 cu.ft. 213 liters	1/5	3.24	115/60/1	NEMA 5-15P
HDSSPM- 2S-47-18	2	2	18x1/6	46 7/8 x 34 x 45 9/10 in 1188 x 864 x 1166 mm	9.5 cu.ft. 268 liters	1/4+	4.56	115/60/1	NEMA 5-15P
HDSSPM- 2S-60-24	2	2	24x1/6	60 1/5 x 34 x 45 9/10 in 1529 x 864 x 1166 mm	15 cu.ft. 428 liters	1/4+	4.8	115/60/1	NEMA 5-15P
HDSSPM- 3S-70-30	3	3	30x1/6	70 2/5 x 34 x 45 9/10 in 1787 x 864 x 1166 mm	15.5 cu.ft. 440 liters	3/4	8.9	115/60/1	NEMA 5-15P

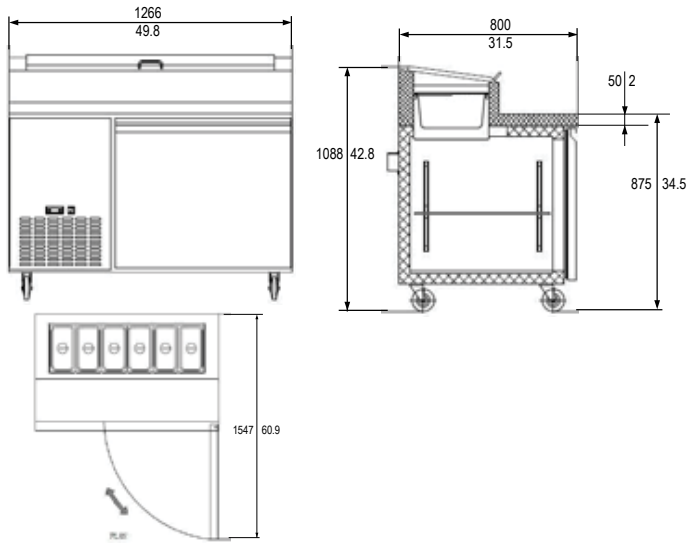
**HDSPP-1-50-6****HDSPP-2-71-9****HDSPP-3-92-12****STANDARD FEATURES**

- Stainless steel exterior, stainless steel interior, aluminum back.
- Refrigeration system keeps food at safe temperatures between 33°F and 41°F (0.5°C to 5°C).
- Self-Closing doors with 90 degree stay-open feature.
- Shelves: Adjustable heavy-duty PVC coated shelves.
- Preinstalled 4" heavy-duty casters with brakes.
- Option of different handles available.
- Electronic control system makes it easy to adjust temperature set point and defrost frequency.
- Slide out refrigeration condensing unit makes it easy to access condenser for cleaning and service.
- Cutting board thickness :

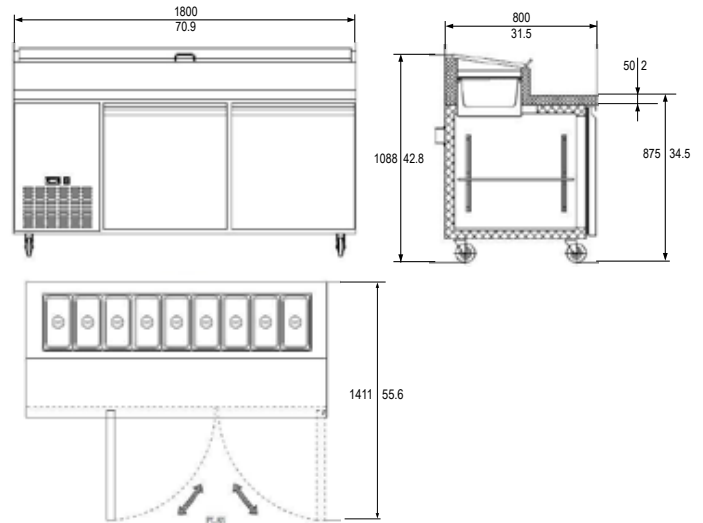
20MM – Exterior/Interior SS304 or Exterior SS430/Interior SS304

15MM- Exterior SS430/Interior painted aluminum
- Polycarbonate pans (per pan layout) included standard
- These units use HYDRO-CARBON R290 refrigerant, which is environmentally friendly and more efficient than R134a/R404a refrigerant.

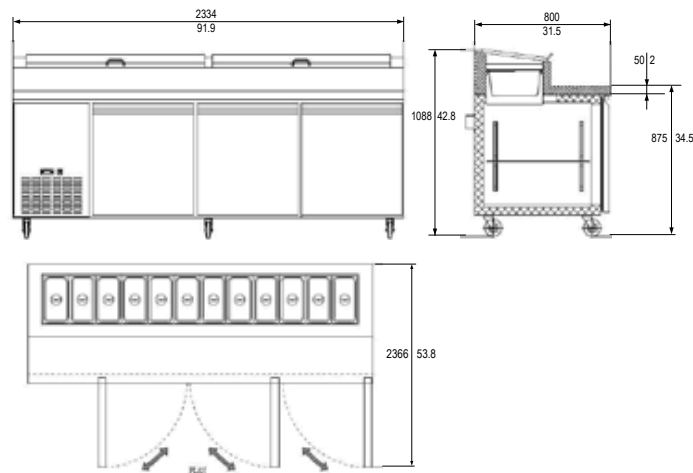
HDSPP-1-50-6



HDSPP-2-71-9



HDSPP-3-92-12



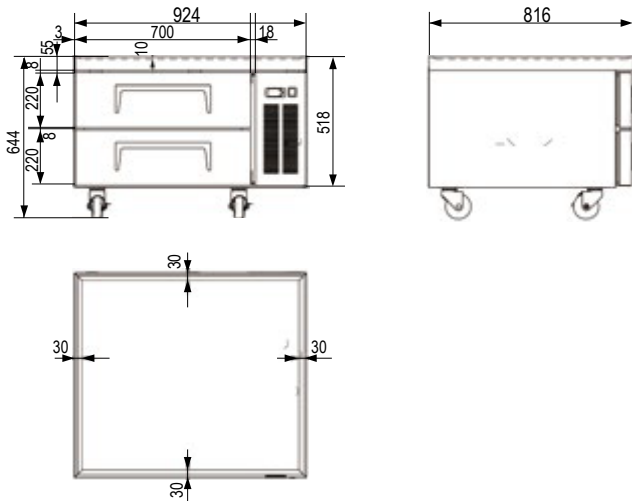
MODEL	DOORS	SHELVES	PAN LAYOUT	DIMENSIONS	CAPACITY	HP	AMPS	VOLTAGE	PLUG TYPE
HDSPP-1-50-6	1	1	6x1/3	49 7/8 x 31 1/2 x 42 7/8 in 1266 x 800 x 1088 mm	13.8 cu.ft. 391 liters	1/6	2.64	115/60/1	NEMA 5-15P
HDSPP-2-71-9	2	2	9X1/3	70 9/10 x 31 1/2 x 42 7/8 in 1800 x 800 x 1088 mm	16.9 cu.ft. 477 liters	1/5	3.42	115/60/1	NEMA 5-15P
HDSPP-3-92-12	3	3	12X1/3	91 9/10 x 31 1/2 x 42 in 2334 x 800 x 1088 mm	24.2 cu.ft. 684 liters	1/4+	5.28	115/60/1	NEMA 5-15P



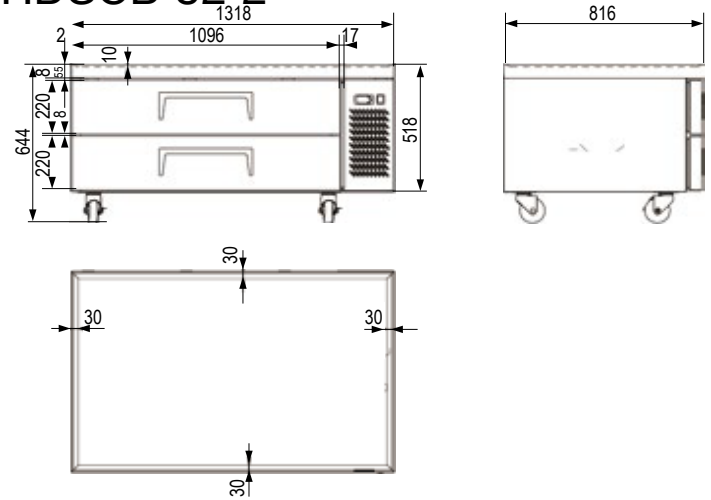
**HDSCB-36-2****HDSCB-52-2****HDSCB-72-4****STANDARD FEATURES**

- Stainless steel interior and exterior retains attractive finish longer.
- Matching aluminum finished back.
- Stainless steel top equipped with a marine edge enables the unit's top to contain drips and spills for easy cleanup.
- Refrigeration system keeps food at safe temperatures between 33°F and 41°F (0.5°C to 5°C).
- Preinstalled 4" heavy-duty casters with brakes.
- Electronic control system makes it easy to adjust temperature set point and defrost frequency.
- Slide out refrigeration condensing unit makes it easy to access condenser for cleaning and service.
- Heavy-duty pull handles.
- These units use HYDRO-CARBON R290 refrigerant, which is environmentally friendly and more efficient than R134a/R404a refrigerant.

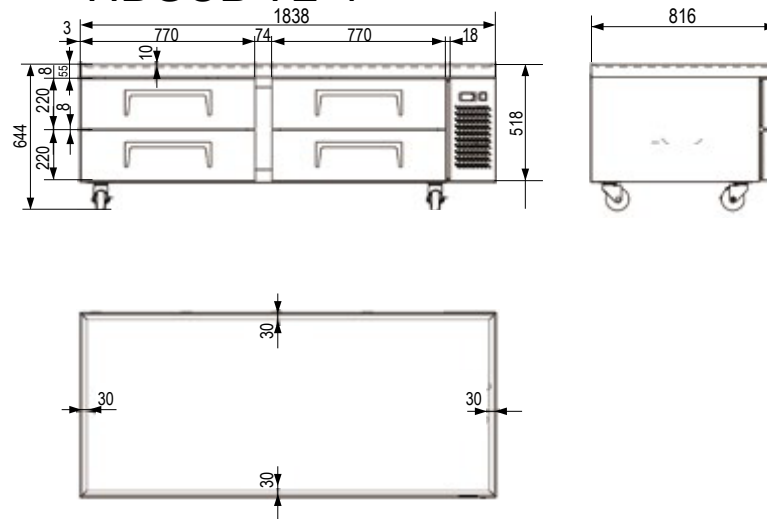
HDSCB-36-2



HDSCB-52-2



HDSCB-72-4

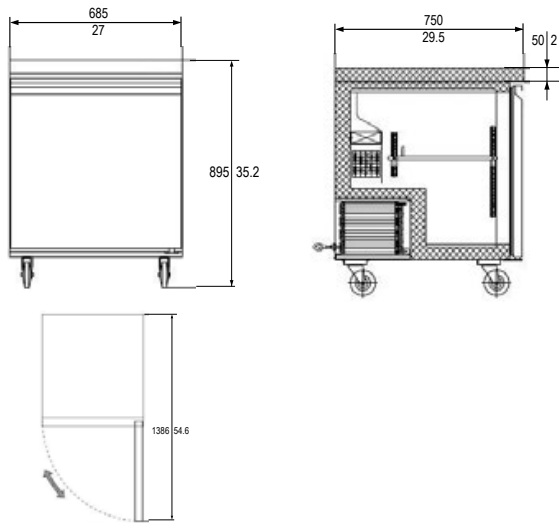


MODEL	DRAWERS	GN PAN	DIMENSIONS	CAPACITY	HP	AMPS	VOLTAGE	PLUG TYPE
HDSCB-36-2	2	2*1/1+6*1/6	36 3/8 x 32 1/8 x 25 3/8 in 924 x 816 x 645 mm	5.9 cu.ft. 167 liters	1/6	2.52	115/60/1	NEMA 5-15P
HDSCB-52-2	2	6*1/1	51 7/8 x 32 1/8 x 25 3/8 in 1318 x 816 x 645 mm	9.9 cu.ft. 280 liters	1/6	3.48	115/60/1	NEMA 5-15P
HDSCB-72-4	4	8*1/1	72 3/8 x 32 1/8 x 25 5/8 in 1839 x 816 x 645 mm	15 cu.ft. 425 liters	1/5	4.68	115/60/1	NEMA 5-15P

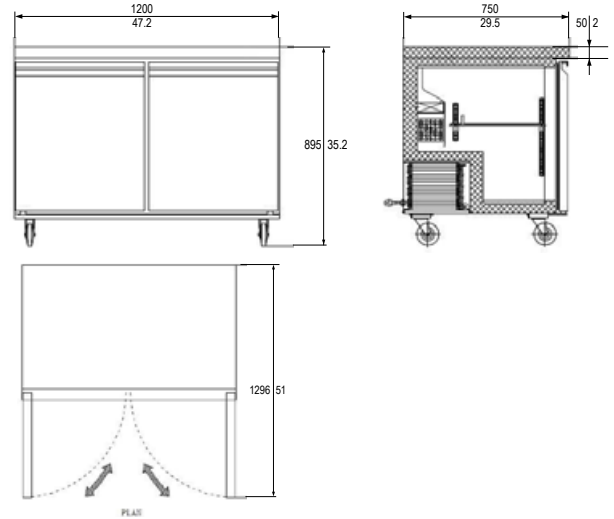
**HDSUCR-1S-27****HDSUCR-2S-47 / HDSUCR-2S-60****HDSUCR-3S-72****STANDARD FEATURES**

- Stainless steel exterior, stainless steel interior, aluminum back.
- Refrigeration system keeps food at safe temperatures between 33°F and 41°F (0.5°C to 5°C).
- Self-Closing doors with 90 degree stay-open feature.
- Shelves: Adjustable heavy-duty PVC coated shelves.
- Option of Backsplashes available.
- Preinstalled 4" heavy-duty casters with brakes.
- Electronic control system makes it easy to adjust temperature set point and defrost frequency.
- Slide out refrigeration condensing unit makes it easy to access condenser for cleaning and service.
- Option of different handles available.
- These units use HYDRO-CARBON R290 refrigerant, which is environmentally friendly and more efficient than R134a/R404a refrigerant.

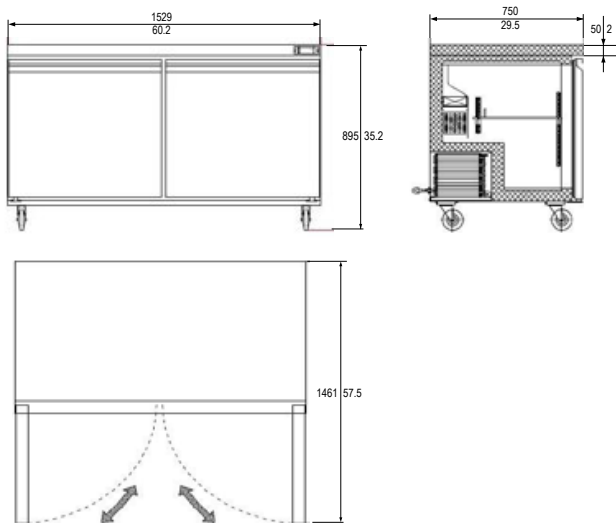
HDSUCR/F-1S-27



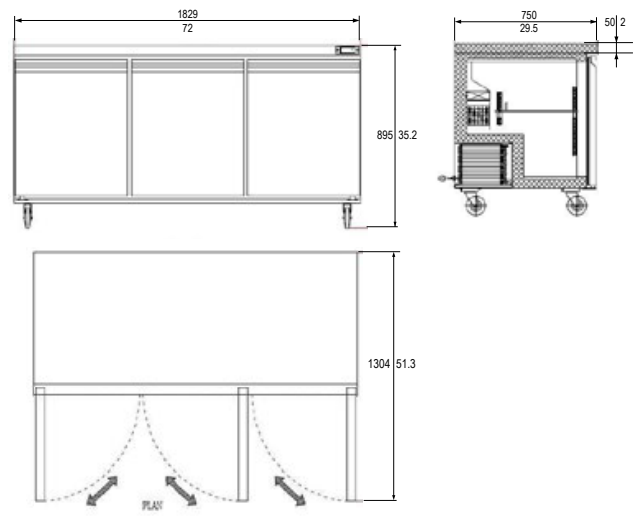
HDSUCR/F-2S-47



HDSUCR/F-2S-60



HDSUCR-3S-72

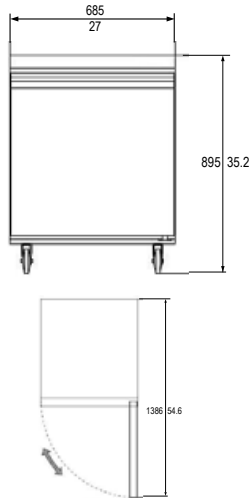


MODEL	DOORS	SHELVES	DIMENSIONS	CAPACITY	HP	AMPS	VOLTAGE	PLUG TYPE
HDSUCR-1S-27	1	1	27 x 29 1/2 x 35 1/5 in 685 x 750 x 895 mm	6.3 cu.ft. 177 liters	1/6	1.9	115/60/1	NEMA 5-15P
HDSUCR-2S-47	2	2	47 1/5 x 29 1/2 x 35 1/5 in 1200 x 750 x 895 mm	12 cu.ft. 338 liters	1/5	2.7	115/60/1	NEMA 5-15P
HDSUCR-2S-60	2	2	60 1/5 x 29 1/2 x 35 1/5 in 1526 x 750 x 895 mm	15 cu.ft. 428 liters	1/5	2.9	115/60/1	NEMA 5-15P
HDSUCR-3S-72	3	3	72 x 29 1/2 x 35 1/5 in 1829 x 750 x 895 mm	15.5 cu.ft. 440 liters	1/5	3.2	115/60/1	NEMA 5-15P

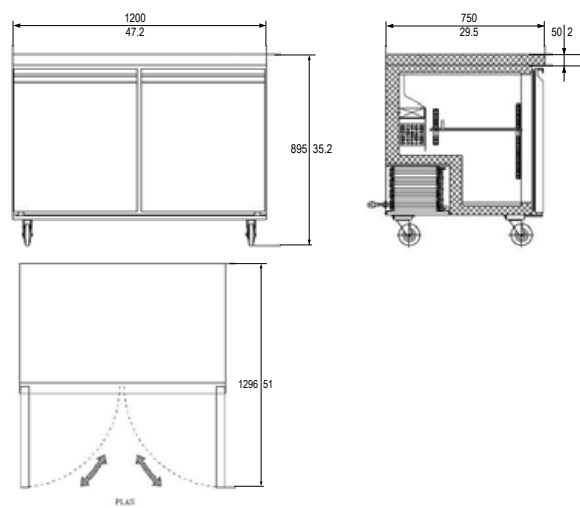
**HDSUCF-1S-27****HDSUCF-2S-47****HDSUCF-2S-60****STANDARD FEATURES**

- Stainless steel exterior, stainless steel interior, aluminum back.
- Refrigeration system keeps food at safe temperatures between -8°F and 0°F (-22°C to -18°C).
- Self-Closing doors with 90 degree stay-open feature.
- Shelves: Adjustable heavy-duty PVC coated shelves.
- Option of Backsplashes available.
- Preinstalled 4" heavy-duty casters with brakes.
- Electronic control system makes it easy to adjust temperature set point and defrost frequency.
- Slide out refrigeration condensing unit makes it easy to access condenser for cleaning and service.
- Option of different handles available.
- These units use HYDRO-CARBON R290 refrigerant, which is environmentally friendly and more efficient than R134a/R404a refrigerant.

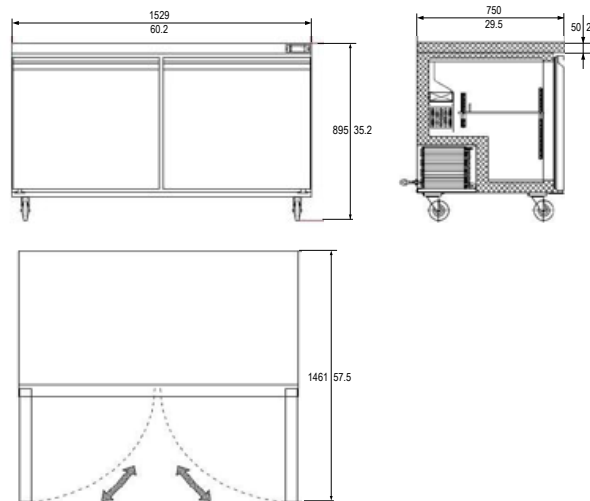
HDSUCR/F-1S-27



HDSUCR/F-2S-47



HDSUCR/F-2S-60

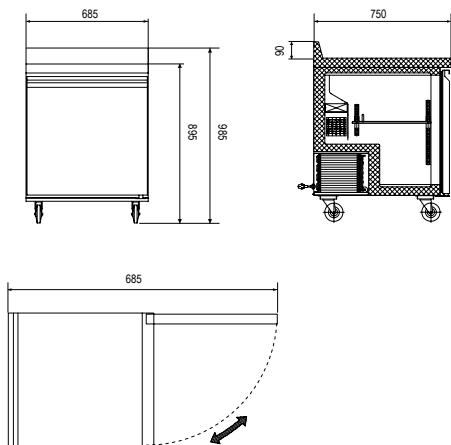


MODEL	DOORS	SHELVES	DIMENSIONS	CAPACITY	HP	AMPS	VOLTAGE	PLUG TYPE
HDSUCF- 1S-27	1	1	27 x 29 1/2 x 35 1/5 in 685 x 750 x 895 mm	6.3 cu.ft. 177 liters	1/5	2.1	115/60/1	NEMA 5-15P
HDSUCF- 2S-47	2	2	47 1/5 x 29 1/2 x 35 1/5 in 1200 x 750 x 895 mm	12 cu.ft. 338 liters	1/4+	4.5	115/60/1	NEMA 5-15P
HDSUCF- 2S-60	2	2	60 1/5 x 29 1/2 x 35 1/5 in 1526 x 750 x 895 mm	15 cu.ft. 428 liters	1/2+	6.36	115/60/1	NEMA 5-15P

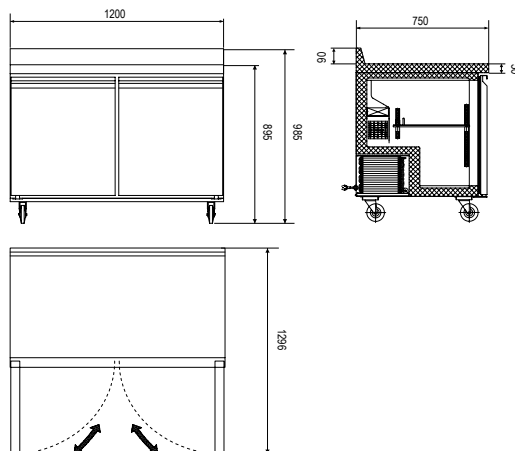
**HDSWTR-1S-27****HDSWTR- 2S-47 / HDSWTR-2S-60****HDSWTR-3S-72****STANDARD FEATURES**

- Stainless steel exterior, stainless steel interior, aluminum back.
- Refrigeration system keeps food at safe temperatures between 33°F and 41°F (0.5°C to 5°C).
- Self-Closing doors with 90 degree stay-open feature.
- Shelves: Adjustable heavy-duty PVC coated shelves.
- Preinstalled 4" heavy-duty casters with brakes.
- Electronic control system makes it easy to adjust temperature set point and defrost frequency.
- Slide out refrigeration condensing unit makes it easy to access condenser for cleaning and service.
- Option of different handles available.
- These units use HYDRO-CARBON R290 refrigerant, which is environmentally friendly and more efficient than R134a/R404a refrigerant.

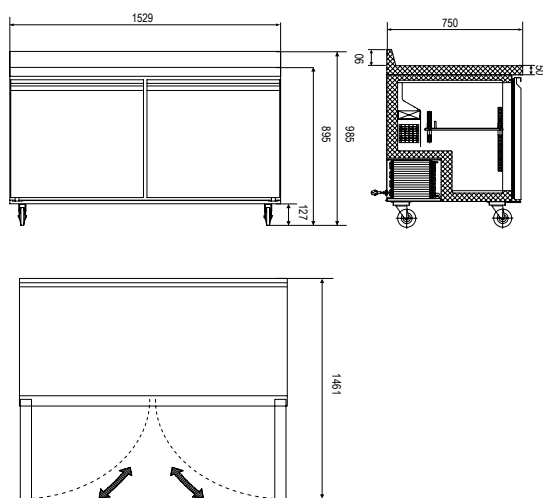
HDSWTR/F-1S-27



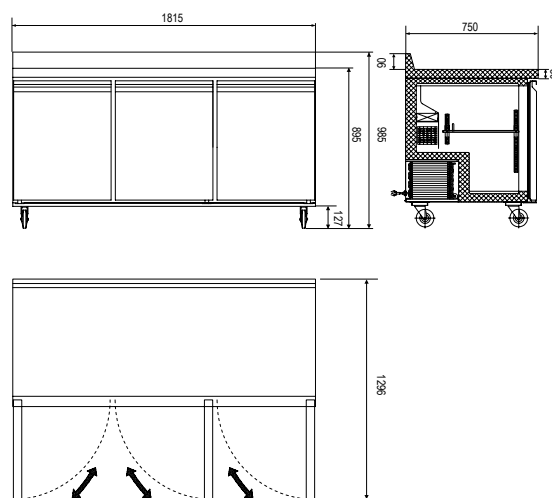
HDSWTR/F-2S-47



HDSWTR/F-2S-60



HDSWTR-3S-72



MODEL	DOORS	SHELVES	DIMENSIONS	CAPACITY	HP	AMPS	VOLTAGE	PLUG TYPE
HDSWTR-1S-27	1	1	27 x 29 1/2 x 38 3/4 in 685 x 750 x 984 mm	6.3 cu.ft. 177 liters	1/6	1.9	115/60/1	NEMA 5-15P
HDSWTR- 2S-47	2	2	47 1/5 x 29 1/2 x 38 3/4 in 1200 x 750 x 984 mm	12 cu.ft. 338 liters	1/5	2.7	115/60/1	NEMA 5-15P
HDSWTR- 2S-60	2	2	60 1/5 x 29 1/2 x 38 3/4 in 1526 x 750 x 984 mm	15 cu.ft. 428 liters	1/5	2.9	115/60/1	NEMA 5-15P
HDSWTR- 3S-72	3	3	72 x 29 1/2 x 38 3/4 in 1829 x 750 x 984 mm	15.5 cu.ft. 440 liters	1/5	3.2	115/60/1	NEMA 5-15P

sales@heavydutysystems.com

Voltage 220/50/1 available.



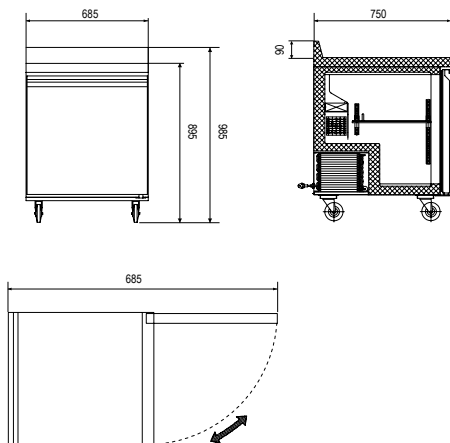
Designed In USA.

PERFORMANCE. DURABILITY. VALUE.

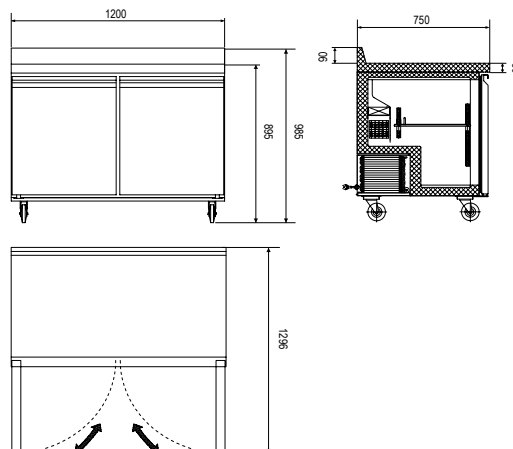
**HDSWTF-1S-27****HDSWTF-2S-47****HDSWTF-2S-60****STANDARD FEATURES**

- Stainless steel exterior, stainless steel interior, aluminum back.
- Refrigeration system keeps food at safe temperatures between -8°F and 0°F (-22°C to -18°C).
- Self-Closing doors with 90 degree stay-open feature.
- Shelves: Adjustable heavy-duty PVC coated shelves.
- Preinstalled 4" heavy-duty casters with brakes.
- Electronic control system makes it easy to adjust temperature set point and defrost frequency.
- Slide out refrigeration condensing unit makes it easy to access condenser for cleaning and service.
- Option of different handles available.
- These units use HYDRO-CARBON R290 refrigerant, which is environmentally friendly and more efficient than R134a/R404a refrigerant.

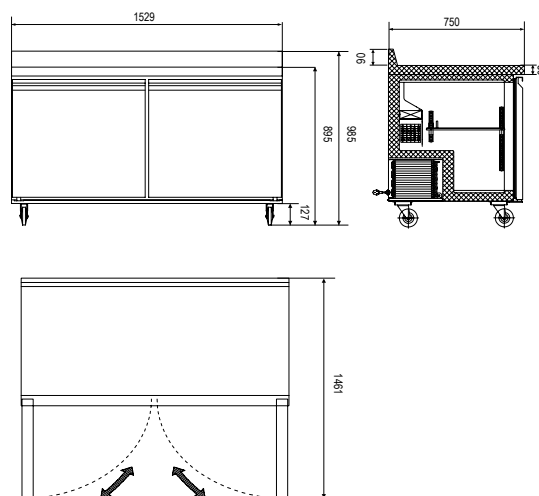
HDSWTR/F-1S-27



HDSWTR/F-2S-47



HDSWTR/F-2S-60



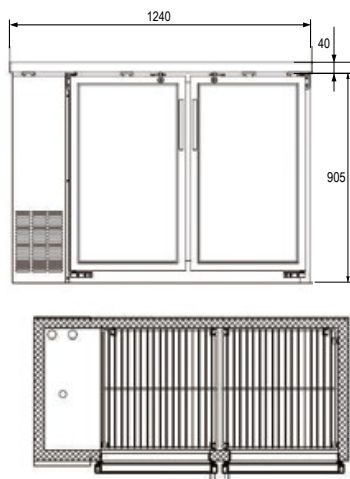
MODEL	DOORS	SHELVES	DIMENSIONS	CAPACITY	HP	AMPS	VOLTAGE	PLUG TYPE
HDSWTF-1S-27	1	1	27 x 29 1/2 x 38 3/4 in 685 x 750 x 984 mm	6.3 cu.ft. 177 liters	1/5	2.1	115/60/1	NEMA 5-15P
HDSWTF-2S-47	2	2	47 1/5 x 29 1/2 x 38 3/4 in 1200 x 750 x 984 mm	12 cu.ft. 338 liters	1/4+	4.5	115/60/1	NEMA 5-15P
HDSWTF-2S-60	2	2	60 1/5 x 29 1/2 x 38 3/4 in 1526 x 750 x 984 mm	15 cu.ft. 428 liters	1/2+	6.36	115/60/1	NEMA 5-15P

**HDSBB-24-48G-LE****HDSBB-24-60G-LE****HDSBB-24-72G-LE****STANDARD FEATURES**

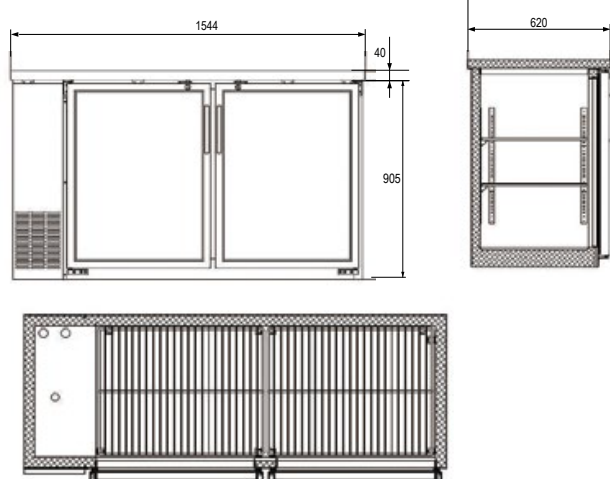
- Durable stainless steel top, interior walls, floor and ceiling.
- Exterior construction is attractive corrosion resistant vinyl on steel in black finish.
- Anti-Fogging Low E Glass
- Refrigeration system keeps the drinks at safe temperatures between 33°F and 41°F (0.5°C to 5°C).
- Electronic control system makes it easy to adjust temperature set point and defrost frequency.
- Shelves: Adjustable heavy-duty PVC coated shelves.
- Option of stainless steel exterior available.
- Preinstalled 4" heavy-duty casters with brakes.
- Option of leveling feet available.
- Self-Closing doors with locks.
- LED interior lighting.
- Slide out refrigeration condensing unit makes it easy to access condenser for cleaning and service.
- These units use HYDRO-CARBON R290 refrigerant, which is environmentally friendly and more efficient than R134a/R404a refrigerant.



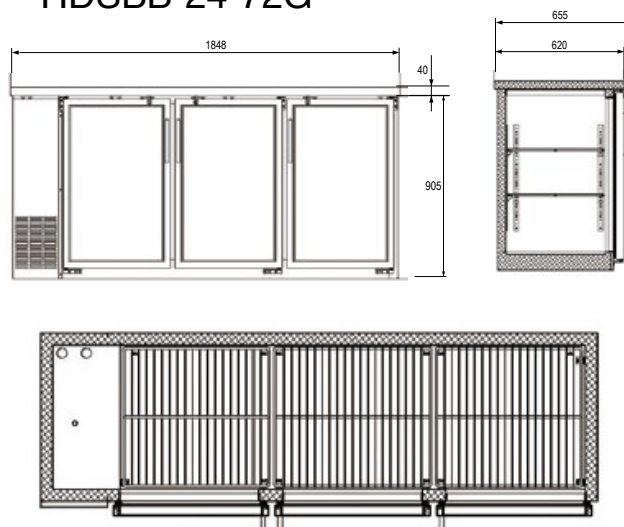
HDSBB-24-48G



HDSBB-24-60G



HDSBB-24-72G



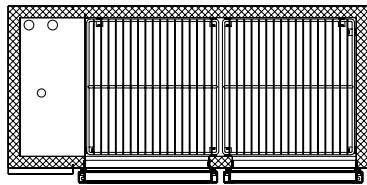
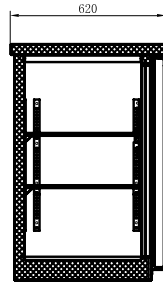
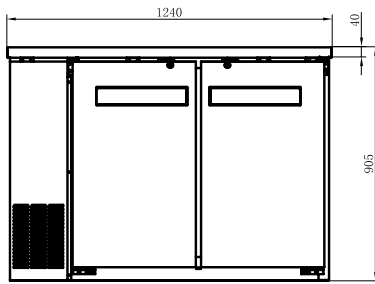
MODEL	DOORS	SHELVES	DIMENSIONS	CAPACITY	HP	AMPS	VOLTAGE	PLUG TYPE
HDSBB-24-48G-LE	2	4	48 7/8 x 24 3/8 x 35 5/8 in 1240 x 620 x 905 mm	11.8 cu.ft. 335 liters	1/5	2.88	115/60/1	NEMA 5-15P
HDSBB-24-60G-LE	2	4	60 3/4 x 24 3/8 x 35 5/8 in 1544 x 620 x 905 mm	15.8 cu.ft. 446 liters	1/5	2.88	115/60/1	NEMA 5-15P
HDSBB-24-72G-LE	3	6	72 3/4 x 24 3/8 x 35 5/8 in 1848 x 620 x 905 mm	19.6 cu.ft. 556 liters	1/4+	3.96	115/60/1	NEMA 5-15P

**HDSBB-24-48S****HDSBB-24-60S****HDSBB-24-72S****STANDARD FEATURES**

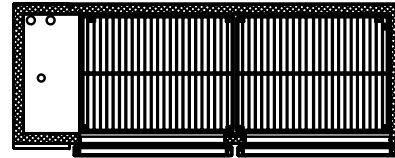
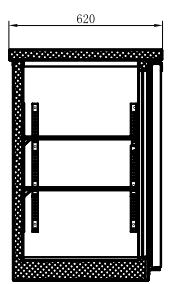
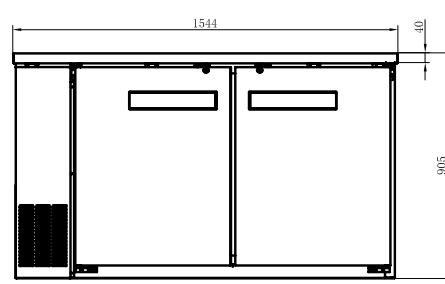
- Durable stainless steel top, interior walls, floor and ceiling.
- Exterior construction is attractive corrosion resistant vinyl on steel in black finish.
- Refrigeration system keeps the drinks at safe temperatures between 33°F and 41°F (0.5°C to 5°C).
- Electronic control system makes it easy to adjust temperature set point and defrost frequency.
- Shelves: Adjustable heavy-duty PVC coated shelves.
- Option of stainless steel exterior available.
- Preinstalled 4" heavy-duty casters with brakes.
- Option of leveling feet available.
- Self-Closing doors with locks.
- LED interior lighting.
- Slide out refrigeration condensing unit makes it easy to access condenser for cleaning and service.
- These units use HYDRO-CARBON R290 refrigerant, which is environmentally friendly and more efficient than R134a/R404a refrigerant.



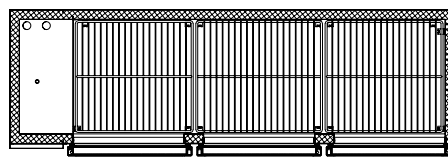
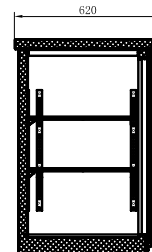
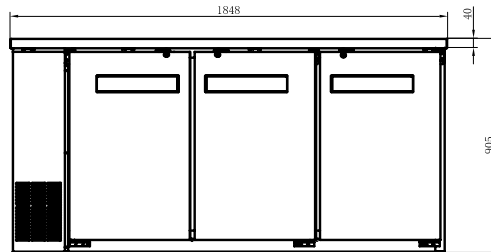
HDSBB-24-48S



HDSBB-24-60S



HDSBB-24-72S



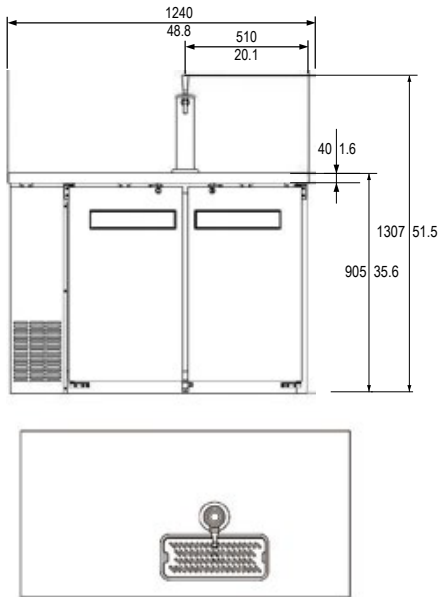
MODEL	DOORS	SHELVES	DIMENSIONS	CAPACITY	HP	AMPS	VOLTAGE	PLUG TYPE
HDSBB-24-48S	2	4	48 7/8 x 24 3/8 x 35 5/8 in 1240 x 620 x 905 mm	11.8 cu.ft. 335 liters	1/5	2.88	115/60/1	NEMA 5-15P
HDSBB-24-60S	2	4	60 3/4 x 24 3/8 x 35 5/8 in 1544 x 620 x 905 mm	15.8 cu.ft. 446 liters	1/5	2.88	115/60/1	NEMA 5-15P
HDSBB-24-72S	3	6	72 3/4 x 24 3/8 x 35 5/8 in 1848 x 620 x 905 mm	19.6 cu.ft. 556 liters	1/4	3.96	115/60/1	NEMA 5-15P

**HDSDD-24-48****HDSDD-24-60****HDSDD-24-72****STANDARD FEATURES**

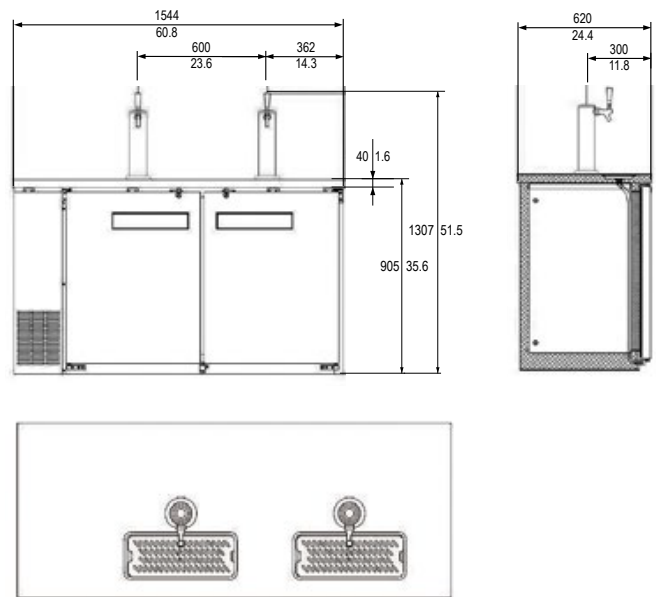
- Durable stainless steel top, interior walls, floor and ceiling.
- Exterior construction is attractive corrosion resistant vinyl on steel in black finish.
- Refrigeration system keeps the drinks at safe temperatures between 33°F and 41°F (0.5°C to 5°C).
- Electronic control system makes it easy to adjust temperature set point and defrost frequency.
- Shelves: Adjustable heavy-duty PVC coated shelves.
- Option of stainless steel exterior available.
- Preinstalled 4" heavy-duty casters with brakes.
- Option of leveling feet available.
- Self-Closing doors with locks.
- LED interior lighting.
- Slide out refrigeration condensing unit makes it easy to access condenser for cleaning and service.
- These units use HYDRO-CARBON R290 refrigerant, which is environmentally friendly and more efficient than R134a/R404a refrigerant.



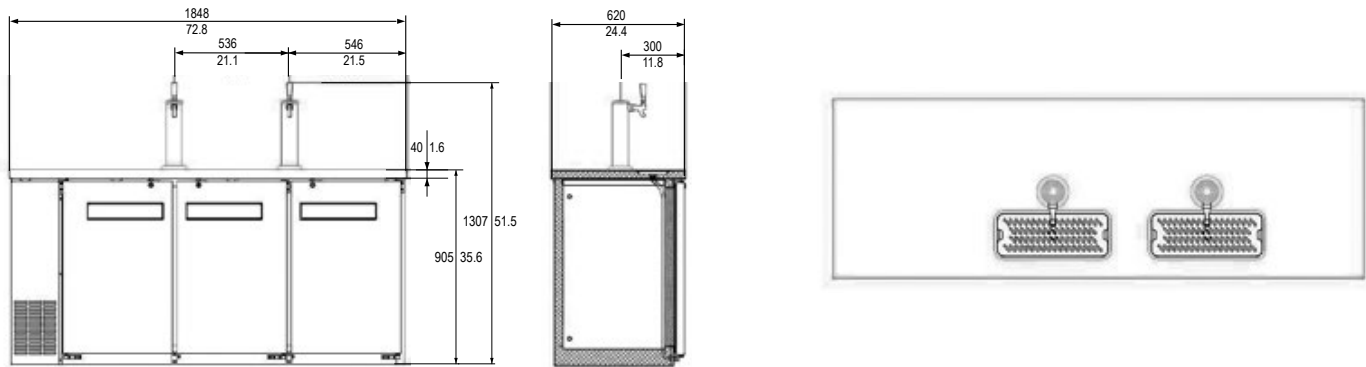
HDSDD-24-48



HDSDD-24-60



HDSDD-24-72



MODEL	DOORS	SHELVES	DIMENSIONS	CAPACITY	HP	AMPS	VOLTAGE	PLUG TYPE
HDSDD-24-48	2	4	48 7/8 x 24 3/8 x 35 5/8 in 1240 x 620 x 905 mm	11.8 cu.ft. 2*1/2 barrel	1/5	3	115/60/1	NEMA 5-15P
HDSDD-24-60	2	4	60 3/4 x 24 3/8 x 35 5/8 in 1544 x 620 x 905 mm	15.8 cu.ft. 2*1/2 barrel	1/5	3	115/60/1	NEMA 5-15P
HDSDD-24-72	3	6	72 3/4 x 24 3/8 x 35 5/8 in 1848 x 620 x 905 mm	19.6 cu.ft. 3*1/2 barrel	1/4	4	115/60/1	NEMA 5-15P



HDSDD-30-23



HDSDD-27-58



HDSDD-27-69



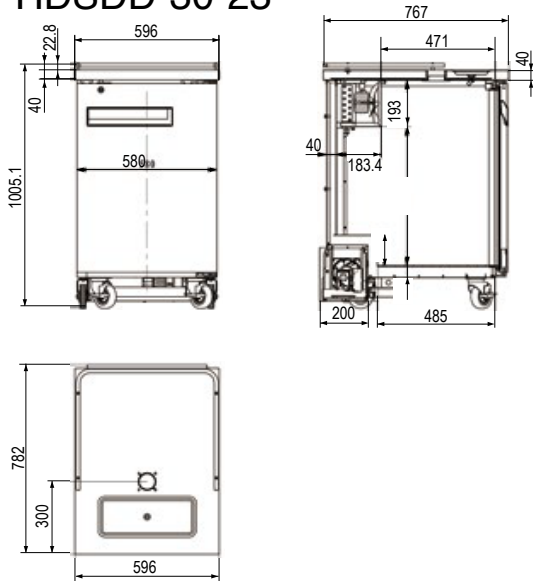
HDSDD-27-90

STANDARD FEATURES

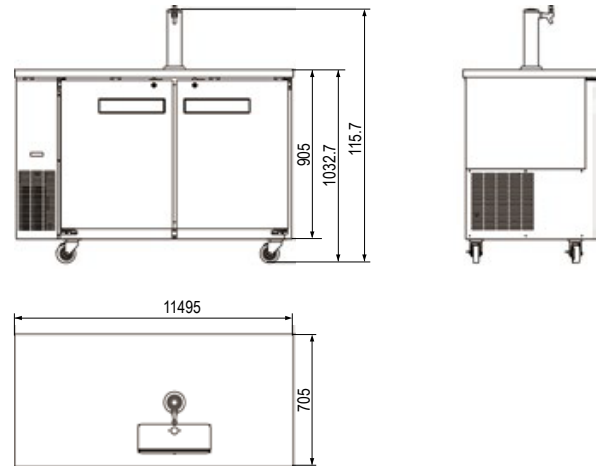
- Durable stainless steel top, interior walls, floor and ceiling.
- Exterior construction is attractive corrosion resistant vinyl on steel in black finish.
- Refrigeration system keeps the drinks at safe temperatures between 33°F and 41°F (0.5°C to 5°C).
- Electronic control system makes it easy to adjust temperature set point and defrost frequency.
- Shelves: Adjustable heavy-duty PVC coated shelves.
- Option of stainless steel exterior available.
- Preinstalled 4" heavy-duty casters with brakes.
- Option of leveling feet available.
- Self-Closing doors with locks.
- LED interior lighting.
- Slide out refrigeration condensing unit makes it easy to access condenser for cleaning and service.
- These units use HYDRO-CARBON R290 refrigerant, which is environmentally friendly and more efficient than R134a/R404a refrigerant.



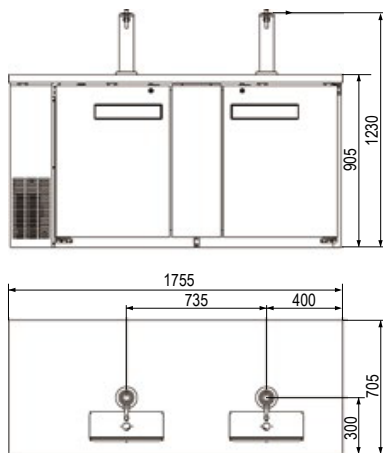
HDSDD-30-23



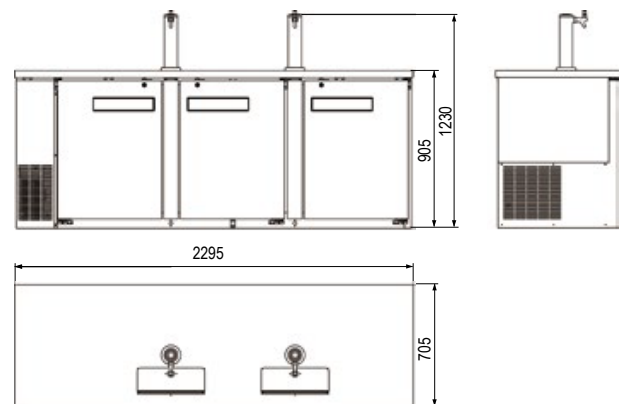
HDSDD-27-58



HDSDD-27-69



HDSDD-27-90



MODEL	DOORS	SHELVES	DIMENSIONS	CAPACITY	HP	AMPS	VOLTAGE	PLUG TYPE
HDSDD-30-23	1	1	23 1/2 x 30 3/8 x 38 3/4 in 596 x 772 x 983 mm	6.5 cu.ft. 1*1/2 barrel	1/6	1.92	115/60/1	NEMA 5-15P
HDSDD-27-58	2	4	58 7/8 x 27 3/4 x 35 5/8 in 1495 x 705 x 905 mm	19 cu.ft. 2*1/2 barrel	1/5	2.88	115/60/1	NEMA 5-15P
HDSDD-27-69	2	4	69 1/8 x 27 3/4 x 35 5/8 in 1755 x 705 x 905 mm	23.3 cu.ft. 3*1/2 barrel	1/5	3.6	115/60/1	NEMA 5-15P
HDSDD-27-90	3	6	90 3/8 x 27 3/4 x 35 5/8 in 2295 x 705 x 905 mm	32 cu.ft. 4*1/2 barrel	1/4+	4.7	115/60/1	NEMA 5-15P



HDSBB-30-23G-LE



HDSBB-27-58G-LE



HDSBB-27-69G-LE



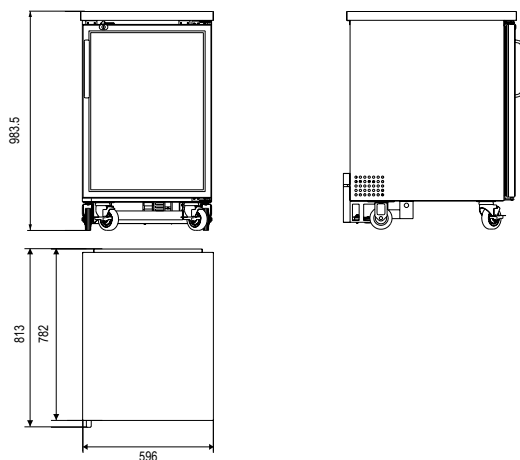
HDSBB-27-90G-LE

STANDARD FEATURES

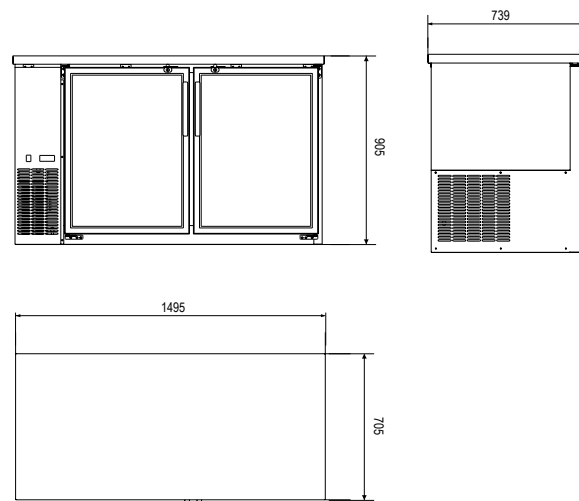
- Durable stainless steel top, interior walls, floor and ceiling.
- Exterior construction is attractive corrosion resistant vinyl on steel in black finish.
- Anti-Fogging Low E Glass
- Refrigeration system keeps the drinks at safe temperatures between 33°F and 41°F (0.5°C to 5°C).
- Electronic control system makes it easy to adjust temperature set point and defrost frequency.
- Shelves: Adjustable heavy-duty PVC coated shelves.
- Option of stainless steel exterior available.
- Preinstalled 4" heavy-duty casters with brakes.
- Option of leveling feet available.
- Self-Closing doors with locks.
- LED interior lighting.
- Slide out refrigeration condensing unit makes it easy to access condenser for cleaning and service.
- These units use HYDRO-CARBON R290 refrigerant, which is environmentally friendly and more efficient than R134a/R404a refrigerant.



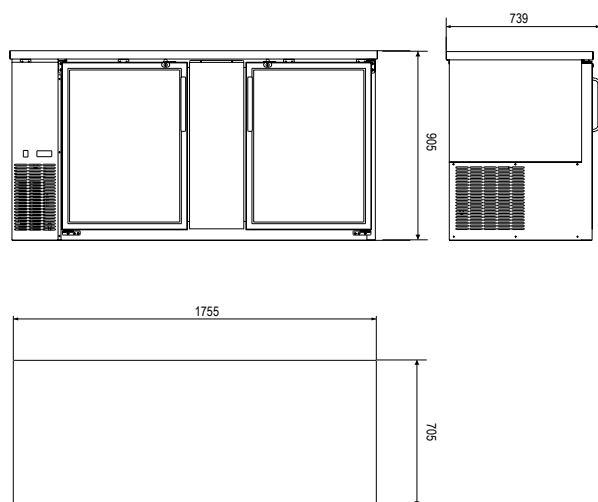
HDSBB-30-23G



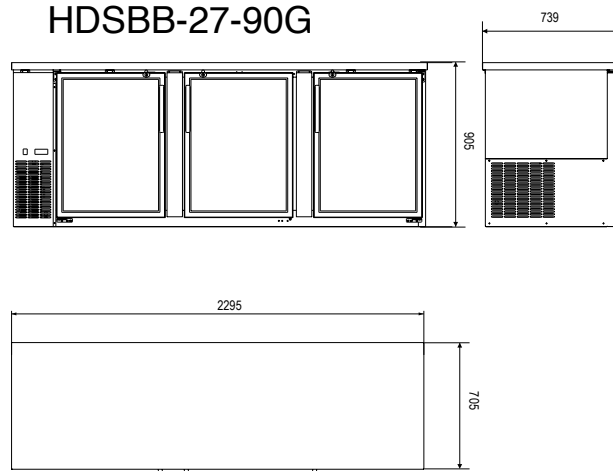
HDSBB-27-58G



HDSBB-27-69G



HDSBB-27-90G



MODEL	DOORS	SHELVES	DIMENSIONS	CAPACITY	HP	AMPS	VOLTAGE	PLUG TYPE
HDSBB-30-23G	1	1	23 1/2 x 30 3/8 x 38 3/4 in 596 x 772 x 983 mm	6.5 cu.ft. 186 liters	1/6	1.92	115/60/1	NEMA 5-15P
HDSBB-27-58G	2	4	58 7/8 x 27 3/4 x 35 5/8 in 1495 x 705 x 905 mm	19 cu.ft. 546 liters	1/5	2.88	115/60/1	NEMA 5-15P
HDSBB-27-69G	2	4	69 1/8 x 27 3/4 x 35 5/8 in 1755 x 705 x 905 mm	23.3 cu.ft. 666 liters	1/5	3.6	115/60/1	NEMA 5-15P
HDSBB-27-90G	3	6	90 3/8 x 27 3/4 x 35 5/8 in 2295 x 705 x 905 mm	32 cu.ft. 916 liters	1/4+	4.7	115/60/1	NEMA 5-15P

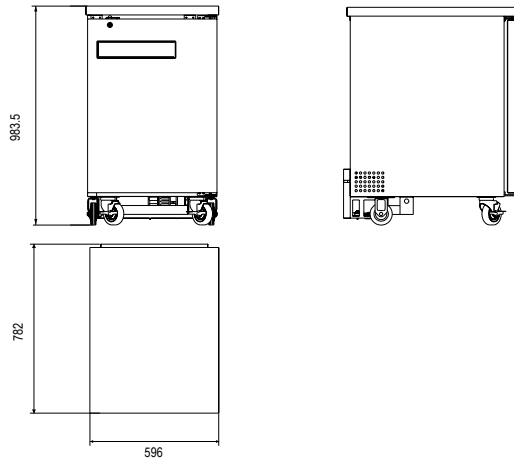


**HDSBB-30-23S****HDSBB-27-58S****HDSBB-27-69S****HDSBB-27-90S****STANDARD FEATURES**

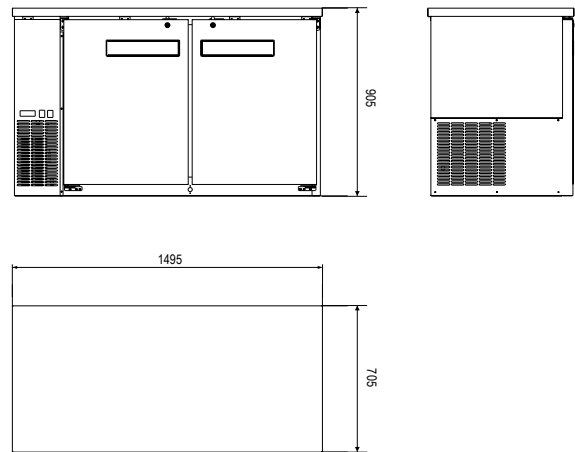
- Durable stainless steel top, interior walls, floor and ceiling.
- Exterior construction is attractive corrosion resistant vinyl on steel in black finish.
- Refrigeration system keeps the drinks at safe temperatures between 33°F and 41°F (0.5°C to 5°C).
- Electronic control system makes it easy to adjust temperature set point and defrost frequency.
- Shelves: Adjustable heavy-duty PVC coated shelves.
- Option of stainless steel exterior available.
- Preinstalled 4" heavy-duty casters with brakes.
- Option of leveling feet available.
- Self-Closing doors with locks.
- LED interior lighting.
- Slide out refrigeration condensing unit makes it easy to access condenser for cleaning and service.
- These units use HYDRO-CARBON R290 refrigerant, which is environmentally friendly and more efficient than R134a/R404a refrigerant.



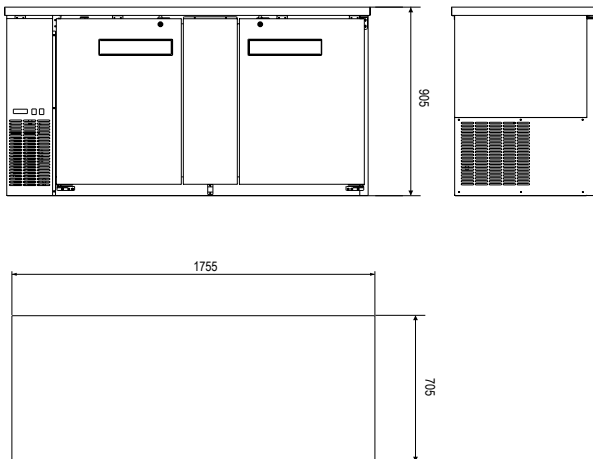
HDSBB-30-23S



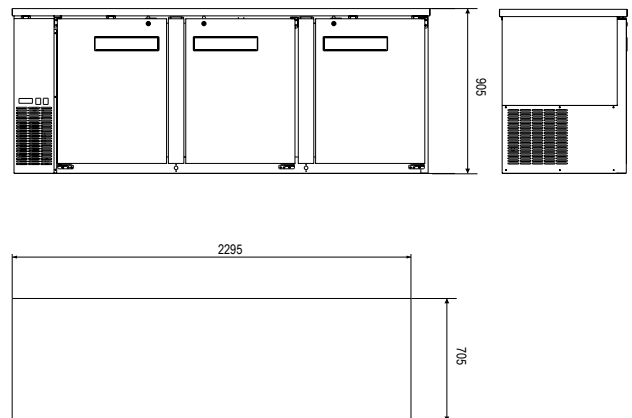
HDSBB-27-58S



HDSBB-27-69S



HDSBB-27-90S



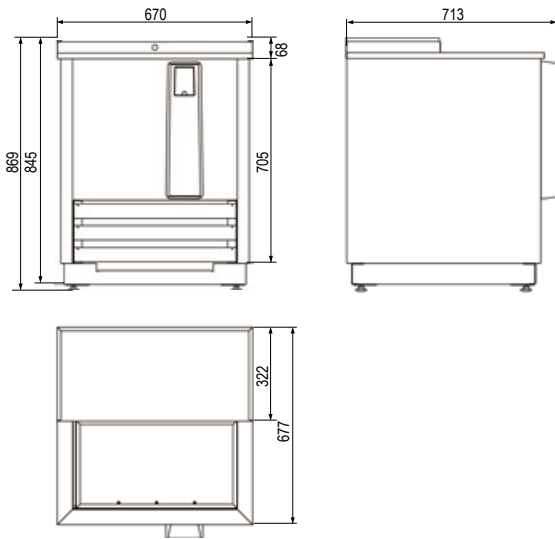
MODEL	DOORS	SHELVES	DIMENSIONS	CAPACITY	HP	AMPS	VOLTAGE	PLUG TYPE
HDSBB-30-23S	1	1	23 1/2 x 30 3/8 x 38 3/4 in 596 x 772 x 983 mm	6.5 cu.ft. 186 liters	1/6	1.92	115/60/1	NEMA 5-15P
HDSBB-27-58S	2	4	58 7/8 x 27 3/4 x 35 5/8 in 1495 x 705 x 905 mm	19 cu.ft. 546 liters	1/5	2.88	115/60/1	NEMA 5-15P
HDSBB-27-69S	2	4	69 1/8 x 27 3/4 x 35 5/8 in 1755 x 705 x 905 mm	23.3 cu.ft. 666 liters	1/5	3.6	115/60/1	NEMA 5-15P
HDSBB-27-90S	3	6	90 3/8 x 27 3/4 x 35 5/8 in 2295 x 705 x 905 mm	32 cu.ft. 916 liters	1/4+	4.7	115/60/1	NEMA 5-15P

**HDSBC-26****HDSBC-49 / HDSBC-64****HDSBC-95****STANDARD FEATURES**

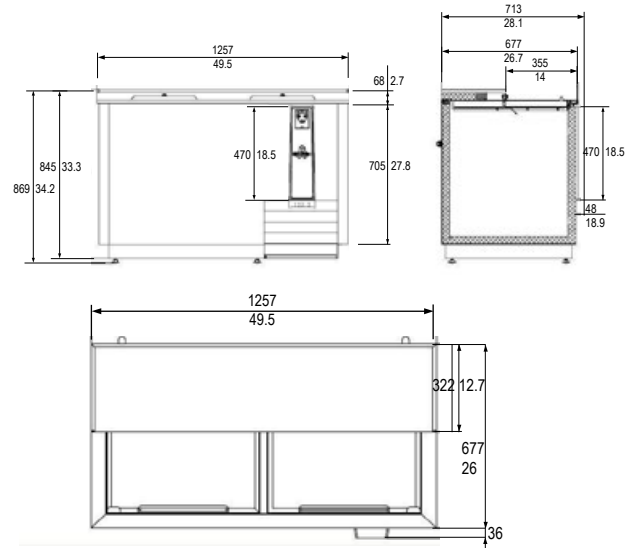
- Durable stainless steel top, interior walls, floor and ceiling.
- Exterior construction is attractive corrosion resistant vinyl on steel in black finish.
- Refrigeration system keeps the drinks at safe temperatures between 33°F and 41°F (0.5°C to 3.3°C).
- Removable bottle cap opener and cap catcher included.
- Option of stainless steel exterior available.
- Electronic control system makes it easy to adjust temperature set point and defrost frequency.
- Slide out refrigeration condensing unit makes it easy to access condenser for cleaning and service.
- Adjustable coated-steel dividers included.
- These units use HYDRO-CARBON R290 refrigerant, which is environmentally friendly and more efficient than R134a/R404a refrigerant.



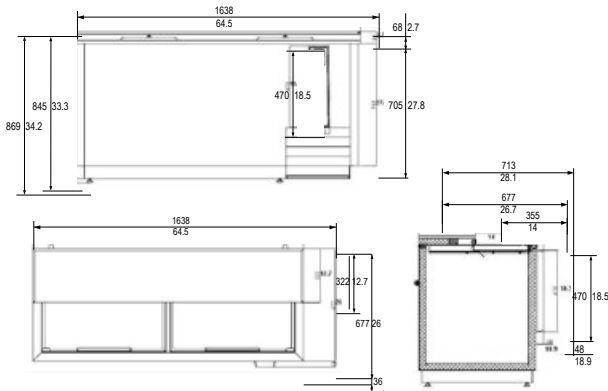
HDSBC-26



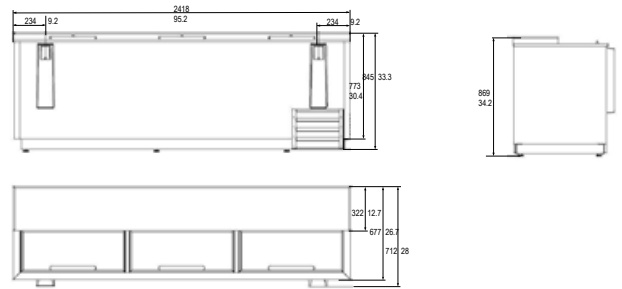
HDSBC-49



HDSBC-64



HDSBC-95

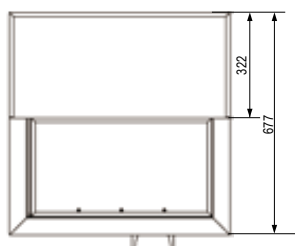
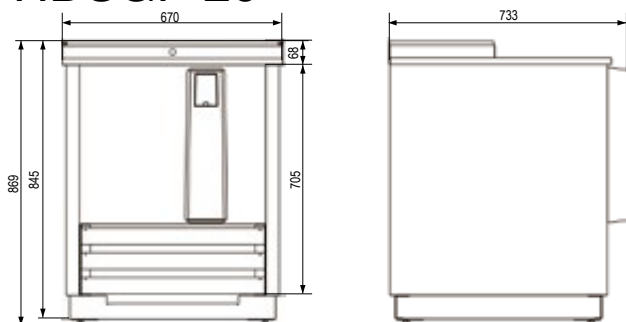


MODEL	LIDS	DIMENSIONS	CAPACITY		HP	AMPS	VOLTAGE	PLUG TYPE
			12 oz. Blts	12 oz. Cans				
HDSBC-26	1	26 3/8 x 28 3/8 x 34 1/4 in 670 x 713 x 869 mm	4.5 cases	6 cases	1/6	2.04	115/60/1	NEMA 5-15P
HDSBC-49	2	49 1/2 x 26 5/8 x 34 1/4 in 1257 x 713 x 869 mm	16.5 cases	24 cases	1/6	2.28	115/60/1	NEMA 5-15P
HDSBC-64	2	64 1/2 x 26 5/8 x 34 1/4 in 1638 x 713 x 869 mm	22 cases	32 cases	1/6	2.6	115/60/1	NEMA 5-15P
HDSBC-95	3	95 1/5 x 26 5/8 x 34 1/4 in 2418 x 713 x 869 mm	37.5 cases	55 cases	1/4+	4.2	115/60/1	NEMA 5-15P

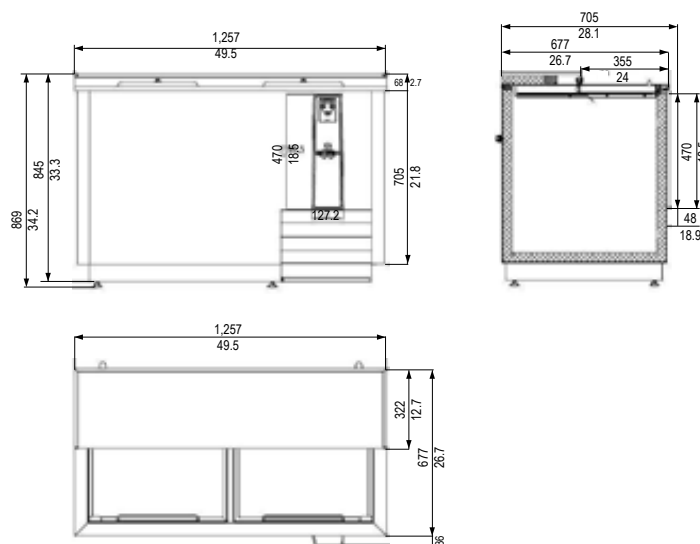
**HDSGF-26****HDSGF-49****STANDARD FEATURES**

- Durable stainless steel top, interior walls, floor and ceiling. Exterior construction is attractive corrosion resistant vinyl on steel in black finish.
- Refrigeration system keeps the glasses/plates at safe temperatures between -5°F and 2°F (-20°C to -16°C).
- Adjustable coated-steel dividers included.
- Option of stainless steel exterior available.
- Electronic control system makes it easy to adjust temperature set point and defrost frequency.
- Slide out refrigeration condensing unit makes it easy to access condenser for cleaning and service.
- These units use HYDRO-CARBON R290 refrigerant, which is environmentally friendly and more efficient than R134a/R404a refrigerant.

HDSGF-26



HDSGF-49



MODEL	LIDS	DIMENSIONS	CAPACITY		HP	AMPS	VOLTAGE	PLUG TYPE
			8" (204mm)	10 oz.				
HDSGF-26	1	26 3/8 x 28 3/8 x 34 1/4 in 670 x 713 x 869 mm	90 mugs	85 steins	1/5	2.04	115/60/1	NEMA 5-15P
HDSGF-49	2	49 1/2 x 26 5/8 x 34 1/4 in 1257 x 713 x 869 mm	250 mugs	240 steins	1/4+	2.28	115/60/1	NEMA 5-15P

sales@heavydutysystems.com

Voltage 220/50/1 available.



Designed In USA.

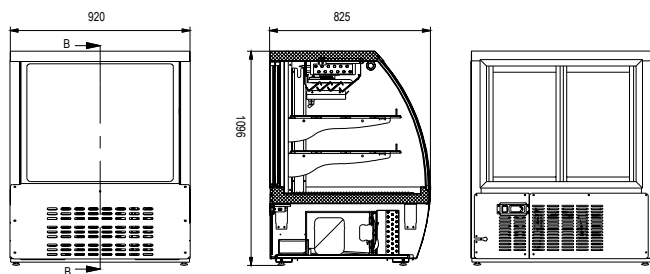
PERFORMANCE. DURABILITY. VALUE.

**HDSRDC-36-LE / HDSRDC-47-LE****HDSRDC-36-SS-LE / HDSRDC-47-SS-LE****HDSRDC-64-LE / HDSRDC-82-LE****STANDARD FEATURES**

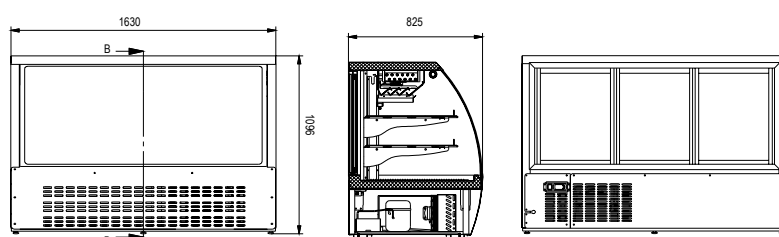
- Interior: Aluminum liner with stainless steel floor.
- Exterior: Black or white coated steel. Stainless steel available.
- Anti-Fogging Low E Glass
- Rounded corner design inside of the cabinet makes it easy to clean the inside storage room.
- Refrigeration system keeps the meats and deli products at safe temperatures between 32°F and 43°F (0°C to 6°C).
- Preinstalled 4" heavy-duty casters with brakes.
- Electronic control system makes it easy to adjust temperature set point and defrost frequency.
- Slide out refrigeration condensing unit makes it easy to access condenser for cleaning and service.
- Shelves: Adjustable heavy-duty PVC coated shelves.
- LED interior lighting.
- These units use HYDRO-CARBON R290 refrigerant, which is environmentally friendly and more efficient than R134a/R404a refrigerant.



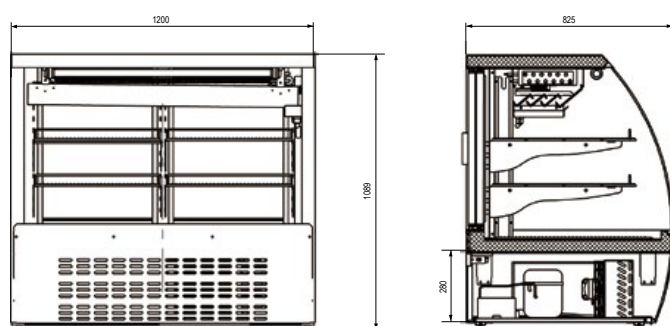
HDSRDC-36



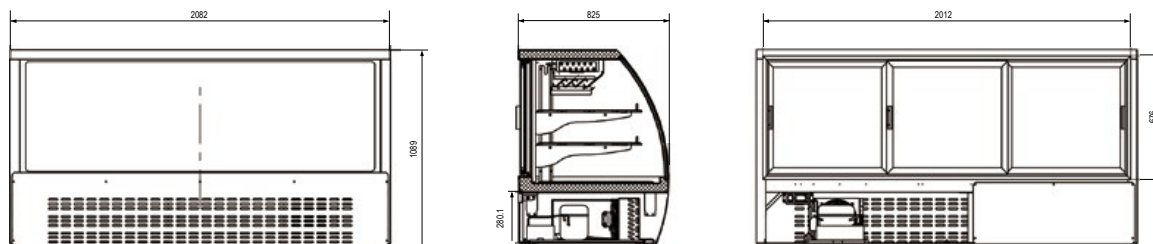
HDSRDC-64



HDSRDC-47



HDSRDC-82



MODEL	DOORS	SHELVES	DIMENSIONS	CAPACITY	HP	AMPS	VOLTAGE	PLUG TYPE
HDSRDC-36-LE	2	1	36 x 32 1/2 x 42 7/8 in 920 x 825 x 1089 mm	12 cu.ft. 330 liters	1/3	4.68	115/60/1	NEMA 5-15P
HDSRDC-47-LE	2	4	48 x 32 1/2 x 42 7/8 in 1200 x 825 x 1089 mm	18 cu.ft. 508 liters	1/4+	3.12	115/60/1	NEMA 5-15P
HDSRDC-64-LE	3	4	64 x 32 1/2 x 42 7/8 in 1630 x 825 x 1089 mm	22 cu.ft. 620 liters	3/5	7.14	115/60/1	NEMA 5-15P
HDSRDC-82-LE	3	6	82 x 32 1/2 x 42 7/8 in 2082 x 825 x 1089 mm	32 cu.ft. 903 liters	3/4	7.08	115/60/1	NEMA 5-15P

sales@heavydutysystems.com

Voltage 220/50/1 available.



Designed In USA.

PERFORMANCE. DURABILITY. VALUE.



Front view

HDSRDCLC-71-LE

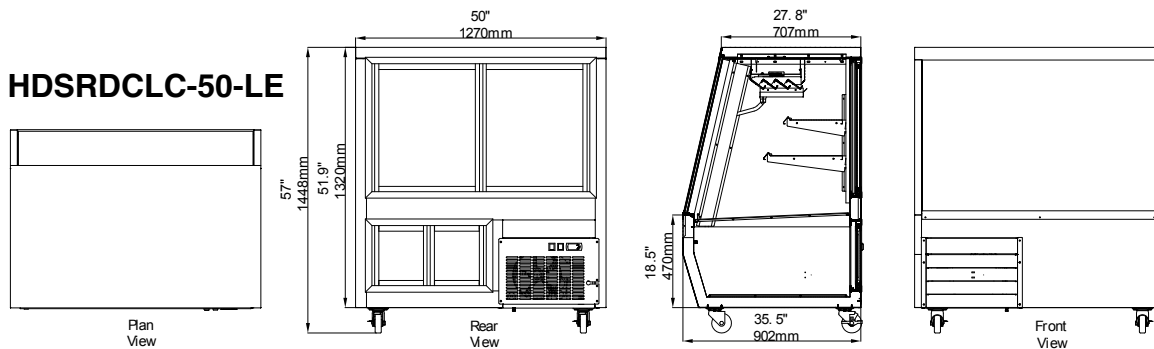
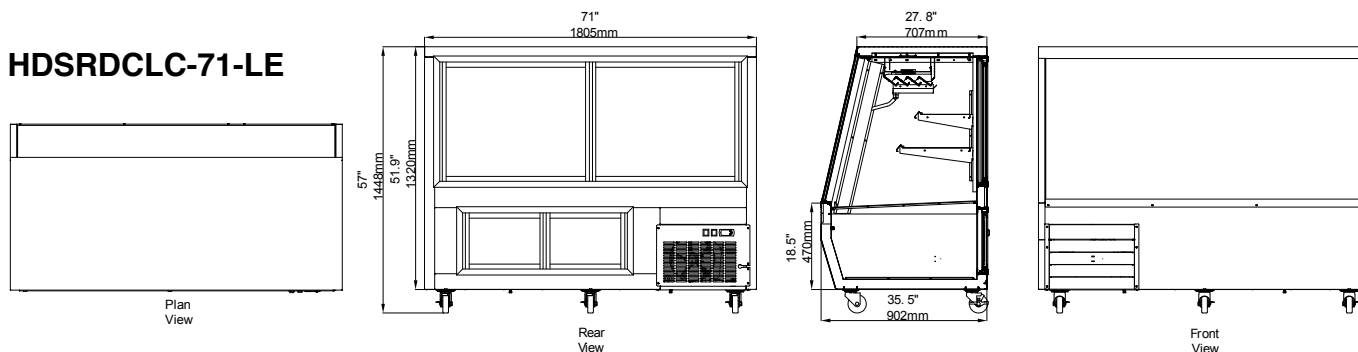
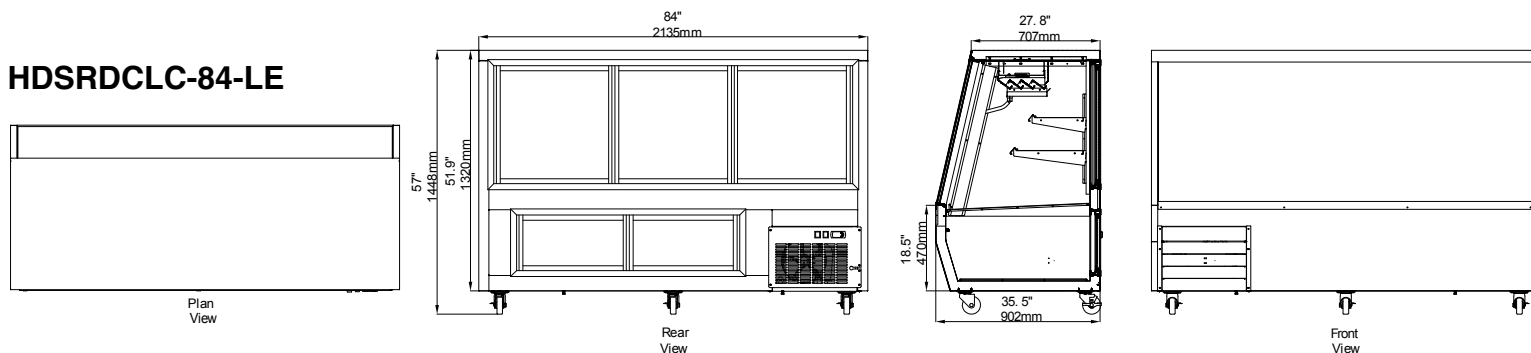
Rear view



Lower Refrigerated Storage Compartment

STANDARD FEATURES

- Double duty deli cases offer two refrigerated compartments. One for display for ready to serve deli products, and a second lower compartment for storage.
- Interior: Aluminum liner with stainless steel floor.
- Exterior: Black or white coated steel. Stainless steel available.
- Anti-Fogging Low E Glass
- Rounded corner design inside of the cabinet makes it easy to clean the inside storage room.
- Refrigeration system keeps the meats and deli products at safe temperatures between 38°F and 40°F (3.3°C to 4.4°C).
- Preinstalled 4" heavy-duty casters with brakes.
- Electronic control system makes it easy to adjust temperature set point and defrost frequency.
- Slide out refrigeration condensing unit makes it easy to access condenser for cleaning and service.
- Shelves: Adjustable stainless steel shelves.
- LED interior lighting.
- These units use HYDROCARBON R290 refrigerant, which is environmentally friendly and more efficient than R134a/R404a refrigerant.

HDSRDCLC-50-LE**HDSRDCLC-71-LE****HDSRDCLC-84-LE**

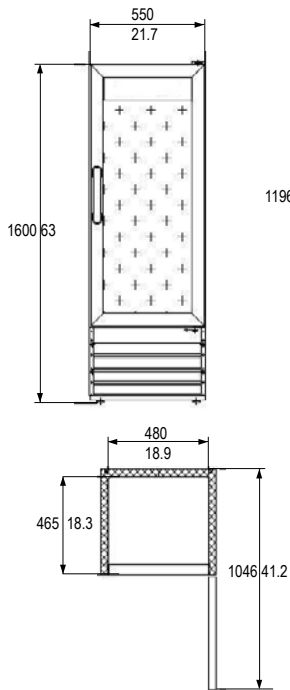
MODEL	DOORS	SHELVES	DIMENSIONS	CAPACITY	HP	AMPS	VOLTAGE	PLUG TYPE
HDSRDCLC-50-LE	2	2	50 x 35 1/2 x 57 in 1270 x 902 x 1448 mm	26.72 cu.ft.	4/5	4.4	115/60/1	NEMA 5-15P
HDSRDCLC-71-LE	2	4	71 x 35 1/2 x 57 in 1805 x 902 x 1448 mm	41.37 cu.ft.	1	7.3	115/60/1	NEMA 5-15P
HDSRDCLC-84-LE	3	6	84 x 35 1/2 x 57 in 2135 x 902 x 1448 mm	50.42 cu.ft.	1	10.2	115/60/1	NEMA 5-15P

**HDSMR-21-1-LE****HDSMR-25-1-LE****HDSMR-28-1-LE****STANDARD FEATURES**

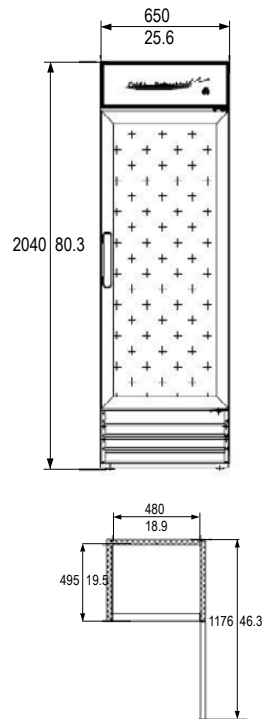
- Exterior: Coated steel. Black or white finish available.
- Anti-Fogging Low E Glass
- Interior: Attractive aluminum liner with stainless steel floor.
- Refrigeration system maintains temperatures between 33°F and 41°F (0.5°C to 5°C).
- Self-Closing double pane glass door with positive seal.
- Shelves: Adjustable heavy-duty PVC coated shelves.
- Leveling feet or casters are available.
- LED lighting.
- Electronic control system makes it easy to adjust temperature set point and defrost frequency.
- Slide out refrigeration condensing unit makes it easy to access condenser for cleaning and service.
- These units use HYDRO-CARBON R290 refrigerant, which is environmentally friendly and more efficient than R134a/R404a refrigerant.



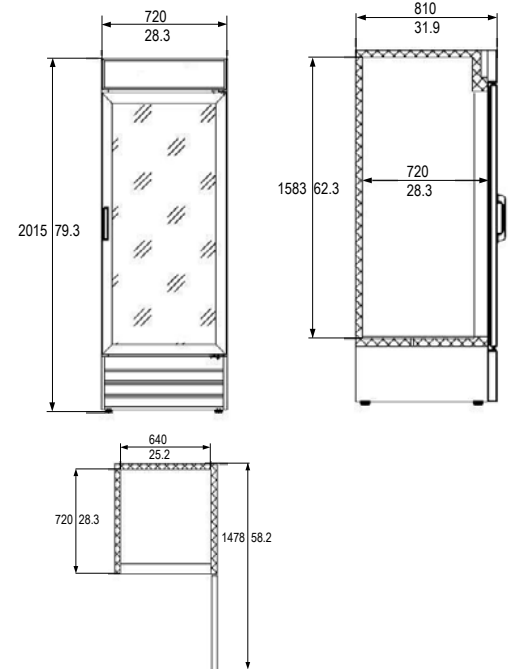
HDSMR-21-1



HDSMR-25-1



HDSMR-28-1



MODEL	DOORS	SHELVES	DIMENSIONS	CAPACITY	HP	AMPS	VOLTAGE	PLUG TYPE
HDSMR-21-1-LE	1	4	21 5/8 x 21 5/8 x 63 in 550 x 550 x 1600 mm	9.1 cu.ft. 258 liters	1/5	2.88	115/60/1	NEMA 5-15P
HDSMR-25-1-LE	1	4	25 3/5 x 22 4/5 x 79 3/8 in 650 x 580 x 2015 mm	14 cu.ft. 398 liters	1/5	2.88	115/60/1	NEMA 5-15P
HDSMR-28-1-LE	1	4	28 3/8 x 31 7/8 x 79 3/8 in 720 x 810 x 2015 mm	23 cu.ft. 648 liters	1/5	3	115/60/1	NEMA 5-15P

sales@heavydutysystems.com

Voltage 220/50/1 available.



Designed In USA.

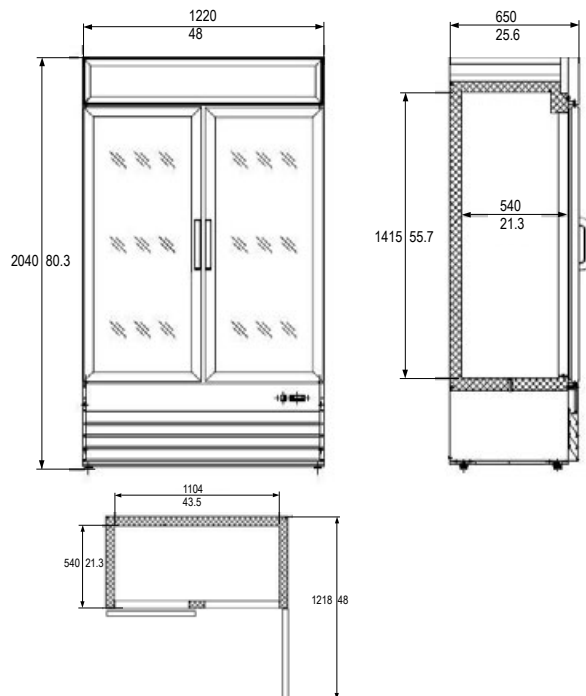
PERFORMANCE. DURABILITY. VALUE.

**HDSMR-48-2-LE****HDSMR-53-2-LE****HDSMR-78-3-LE****STANDARD FEATURES**

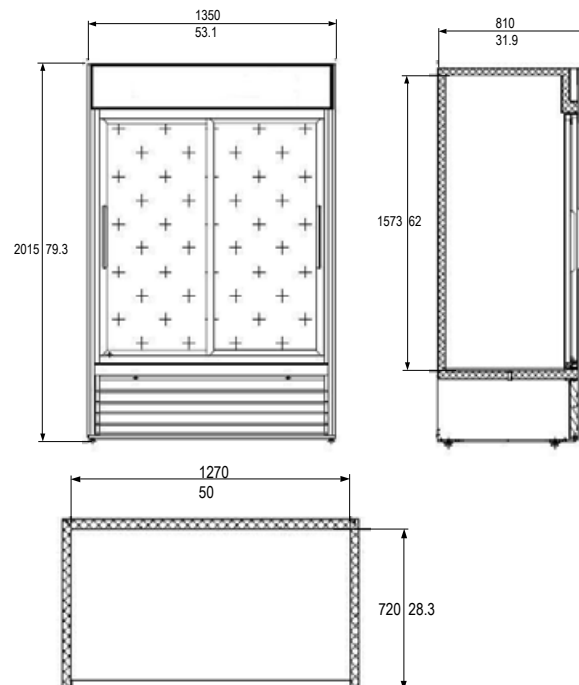
- Exterior: Coated steel. Black or white finish available.
- Anti-Fogging Low E Glass
- Interior: Attractive aluminum liner with stainless steel floor.
- Refrigeration system maintains temperatures between 33°F and 41°F (0.5°C to 5°C).
- Self-Closing double pane glass door with positive seal.
- Shelves: Adjustable heavy-duty PVC coated shelves.
- Leveling feet or casters are available.
- LED lighting.
- Electronic control system makes it easy to adjust temperature set point and defrost frequency.
- Slide out refrigeration condensing unit makes it easy to access condenser for cleaning and service.
- These units use HYDRO-CARBON R290 refrigerant, which is environmentally friendly and more efficient than R134a/R404a refrigerant.



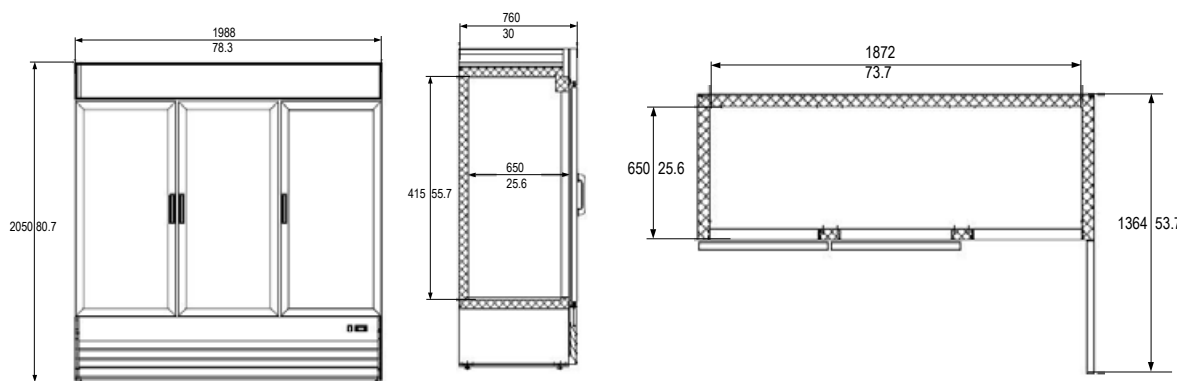
HDSMR-48-2



HDSMR-53-2



HDSMR-78-3



MODEL	DOORS	SHELVES	DIMENSIONS	CAPACITY	HP	AMPS	VOLTAGE	PLUG TYPE
HDSMR-48-2-LE	2	8	48 x 25 3/5 x 80 3/8 in 1220 x 650 x 2040 mm	29 cu.ft. 830 liters	1/4+	4.8	115/60/1	NEMA 5-15P
HDSMR-53-2-LE	2	8	53 1/8 x 31 7/8 x 79 3/8 in 1350 x 810 x 2015 mm	45 cu.ft. 1270 liters	1/4+	4.3	115/60/1	NEMA 5-15P
HDSMR-78-3-LE	3	12	78 3/8 x 30 x 80 3/4 in 1988 x 760 x 2050 mm	53 cu.ft. 1500 liters	3/4	10.7	115/60/1	NEMA 5-20P

sales@heavydutysystems.com

Voltage 220/50/1 available.



Designed In USA.

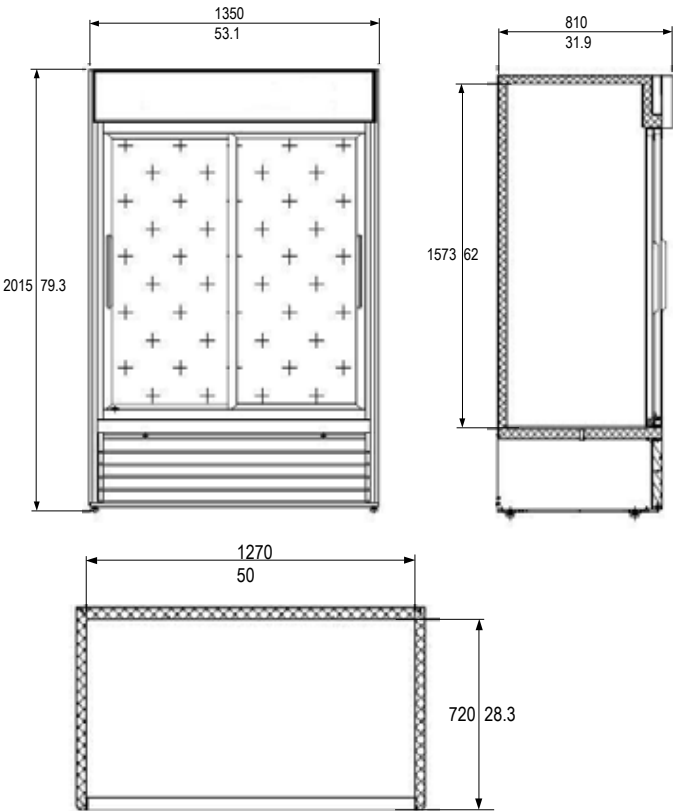
PERFORMANCE. DURABILITY. VALUE.

**HDSMR-53-2-Y Black****HDSMR-53-2-Y White****STANDARD FEATURES**

- Exterior: Coated steel. Black or white finish available.
- Interior: Attractive aluminum liner with stainless steel floor.
- Refrigeration system maintains temperatures between 33°F and 41°F (0.5°C to 5°C).
- Self-Closing double pane glass door with positive seal.
- Shelves: Adjustable heavy-duty PVC coated shelves.
- Leveling feet or casters are available.
- LED lighting.
- Electronic control system makes it easy to adjust temperature set point and defrost frequency.
- Slide out refrigeration condensing unit makes it easy to access condenser for cleaning and service.
- These units use HYDRO-CARBON R290 refrigerant, which is environmentally friendly and more efficient than R134a/R404a refrigerant.



HDSMR-53-2-Y



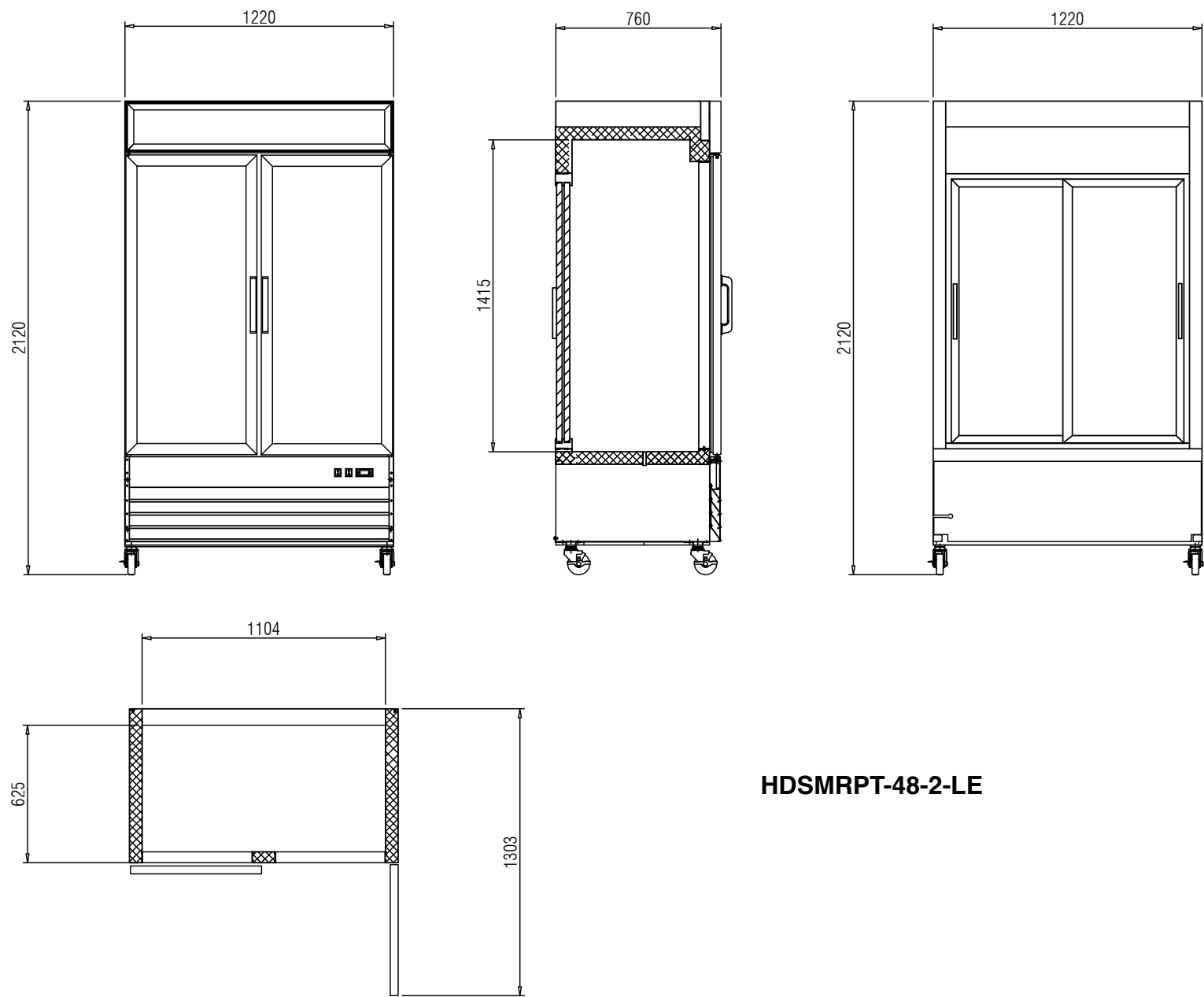
MODEL	DOORS	SHELVES	DIMENSIONS	CAPACITY	HP	AMPS	VOLTAGE	PLUG TYPE
HDSMR-53-2-Y	2	8	53 1/8 x 31 7/8 x 79 3/8 in 1350 x 810 x 2015 mm	45 cu.ft. 1270 liters	1/4+	4.3	115/60/1	NEMA 5-15P

sales@heavydutysystems.com



**HDSMRPT-48-2-LE****STANDARD FEATURES**

- Exterior: Coated steel. Black or white finish available.
- Anti-Fogging Low E Glass.
- Interior: Attractive aluminum liner with stainless steel floor.
- Refrigeration system maintains temperatures between 33°F and 41°F (0.5°C to 5°C).
- (2) front self-closing hinged double pane glass doors, (2) back self-closing sliding double pane glass doors.
- Shelves: Adjustable heavy-duty PVC coated shelves.
- Leveling feet or casters are available.
- LED lighting.
- Electronic control system makes it easy to adjust temperature set point and defrost frequency.
- Slide out refrigeration condensing unit makes it easy to access condenser for cleaning and service.
- These units use HYDROCARBON R290 refrigerant, which is environmentally friendly and more efficient than R134a/R404a refrigerant



HDSMRPT-48-2-LE

MODEL	DOORS	SHELVES	DIMENSIONS	CAPACITY	HP	VOLTAGE	PLUG TYPE
HDSMRPT-48-2-LE	4	8	48 x 30 x 81 in 1220 x 760 x 2060 mm	30.0 cu.ft. 845 liters	1	115/60/1	NEMA 5-15P

sales@heavydutysystems.com

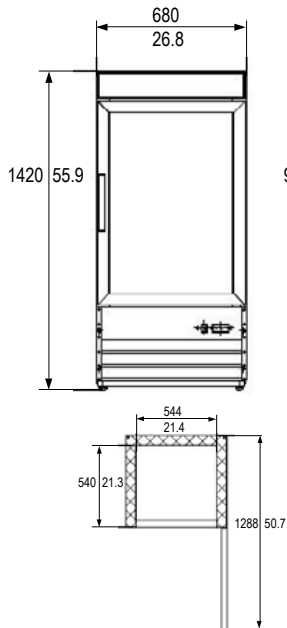
Voltage 220/50/1 available.



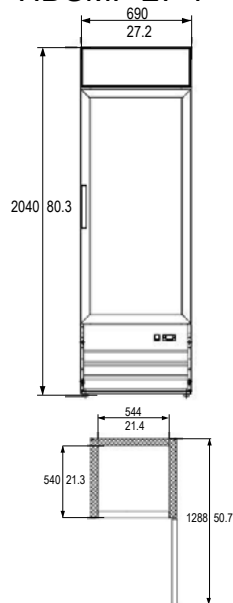
**HDSMF-26-1****HDSMF-27-1****HDSMF-31-1****STANDARD FEATURES**

- Exterior: Coated steel. Black or white finish available.
- Interior: Attractive aluminum liner with stainless steel floor.
- Refrigeration system maintains temperatures between -10°F and 0°F (-23°C to -18°C).
- Self-Closing double pane glass door with positive seal.
- Shelves: Adjustable heavy-duty PVC coated shelves.
- Leveling feet or casters are available.
- LED lighting.
- Electronic control system makes it easy to adjust temperature set point and defrost frequency.
- Slide out refrigeration condensing unit makes it easy to access condenser for cleaning and service.
- These units use HYDRO-CARBON R290 refrigerant, which is environmentally friendly and more efficient than R134a/R404a refrigerant.

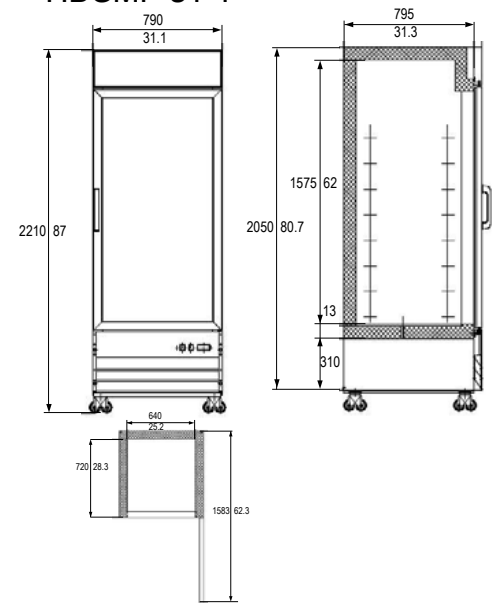
HDSMF-26-1



HDSMF-27-1



HDSMF-31-1



MODEL	DOORS	SHELVES	DIMENSIONS	CAPACITY	HP	AMPS	VOLTAGE	PLUG TYPE
HDSMF-26-1	1	2	26 4/5 x 26 x 55 7/8 in 680 x 660 x 1420 mm	8.5 cu.ft. 240 liters	1/4+	3.5	115/60/1	NEMA 5-15P
HDSMF-27-1	1	4	27 1/5 x 26 1/5 x 80 3/8 in 690 x 665 x 2040 mm	13 cu.ft. 368 liters	3/4	8.8	115/60/1	NEMA 5-15P
HDSMF-31-1	1	4	31 1/8 x 31 3/8 x 80 3/4 in 790 x 795 x 2050 mm	23 cu.ft. 648 liters	3/4	9.4	115/60/1	NEMA 5-15P

sales@heavydutysystems.com

Voltage 220/50/1 available.

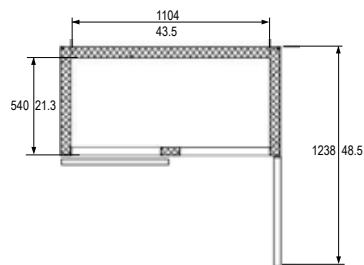
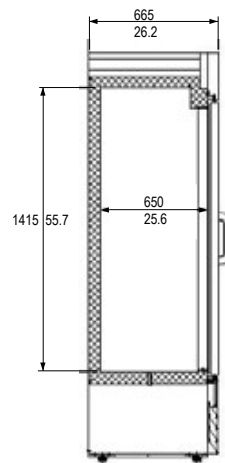
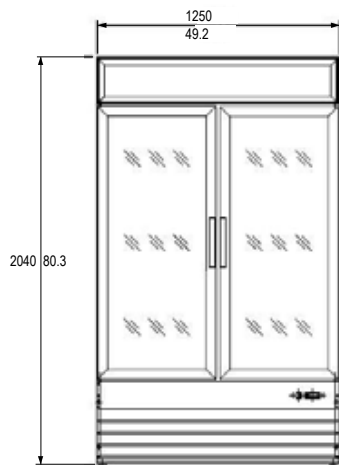
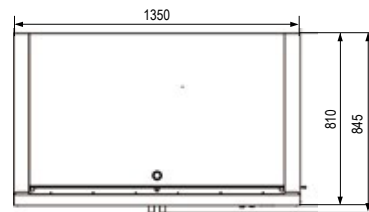
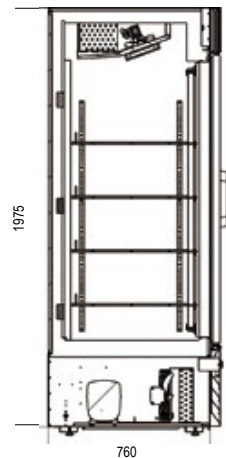
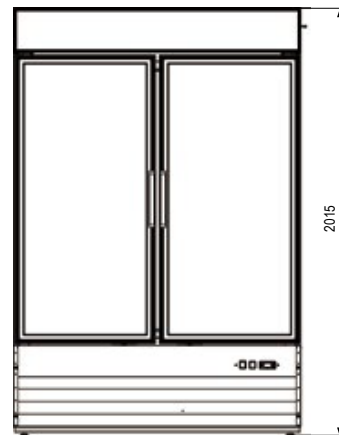
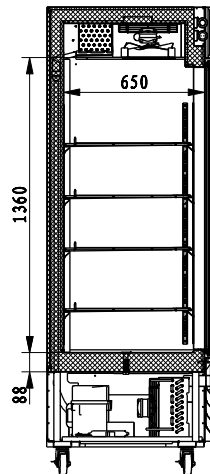
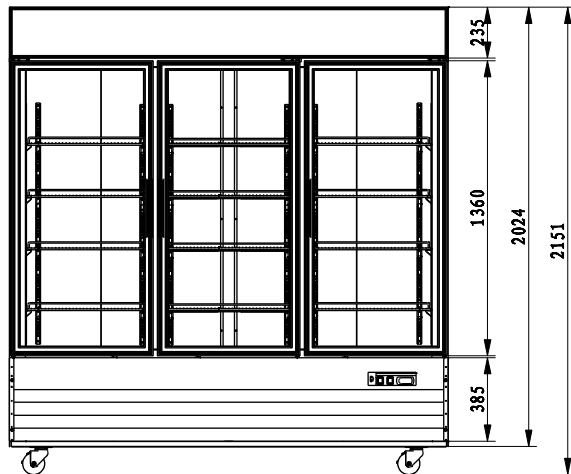
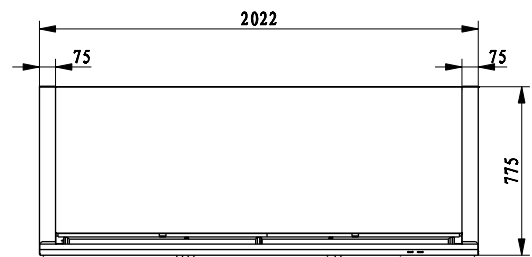


Designed In USA.

PERFORMANCE. DURABILITY. VALUE.

**HDSMF-49-2****HDSMF-53-2****HDSMF-79-3****STANDARD FEATURES**

- Exterior: Coated steel. Black or white finish available.
- Interior: Attractive aluminum liner with stainless steel floor.
- Refrigeration system maintains temperatures between -10°F and 0°F (-23°C to -18°C).
- Self-Closing double pane glass door with positive seal.
- Shelves: Adjustable heavy-duty PVC coated shelves.
- Leveling feet or casters are available.
- LED lighting.
- Electronic control system makes it easy to adjust temperature set point and defrost frequency.
- Slide out refrigeration condensing unit makes it easy to access condenser for cleaning and service.
- These units use HYDRO-CARBON R290 refrigerant, which is environmentally friendly and more efficient than R134a/R404a refrigerant.

**HDSMF-49-2****HDSMF-53-2****HDSMF-79-3**

MODEL	DOORS	SHELVES	DIMENSIONS	CAPACITY	HP	AMPS	VOLTAGE	PLUG TYPE
HDSMF-49-2	2	8	49 1/5 x 26 1/5 x 80 3/8 in 1250 x 665 x 2040 mm	29 cu.ft. 830 liters	3/4	9.4	115/60/1	NEMA 5-15P
HDSMF-53-2	2	8	53 1/8 x 31 7/8 x 79 3/8 in 1350 x 810 x 2015 mm	45 cu.ft. 1270 liters	1	9.2	115/60/1	NEMA 5-15P
HDSMF-79-3	3	12	79 1/2 x 30 3/5 x 80 3/4 in 2020 x 777 x 2050 mm	52 cu.ft. 1479 liters	3/4 x 2	16.3	115/60/1	NEMA 5-20P



HDSFVMR-29-1-LE



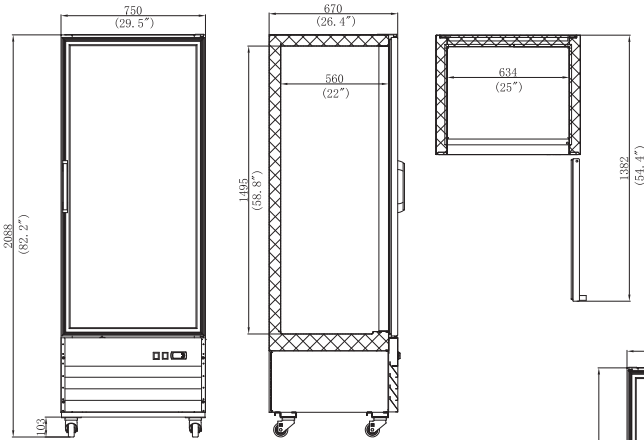
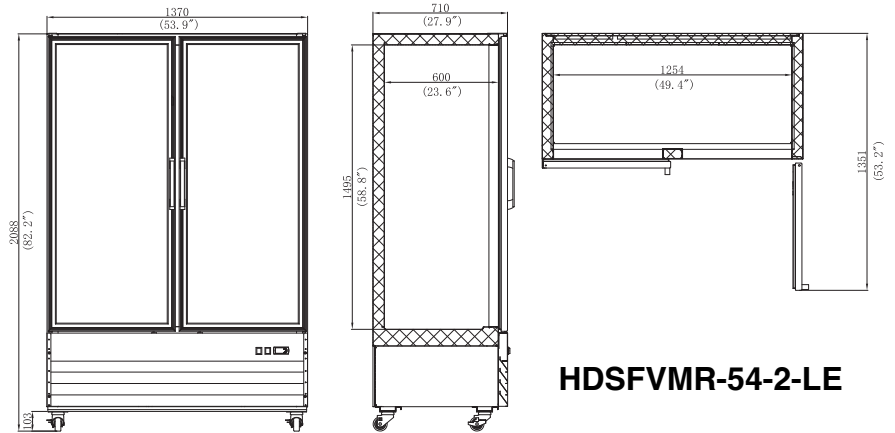
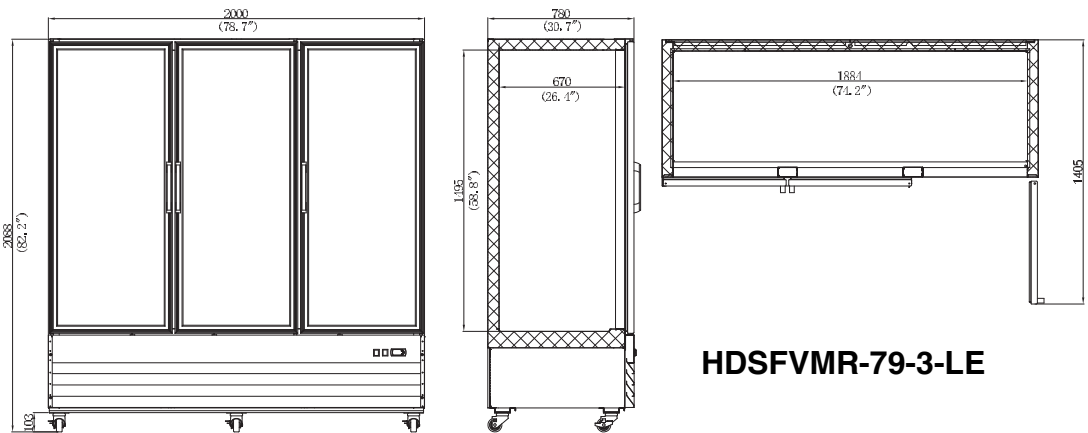
HDSFVMR-54-2-LE



HDSFVMR-79-3-LE

STANDARD FEATURES

- Exterior: Coated steel. Black or white finish available.
- Anti-Fogging Low E Glass.
- Interior: Attractive aluminum liner with stainless steel floor.
- Refrigeration system maintains temperatures between 33°F and 41°F (0.5°C to 5°C).
- Self-Closing double pane glass door with positive seal.
- Shelves: Adjustable heavy-duty PVC coated shelves.
- 4" casters.
- LED lighting.
- Electronic control system makes it easy to adjust temperature set point and defrost frequency.
- Slide out refrigeration condensing unit makes it easy to access condenser for cleaning and service.
- These units use HYDROCARBON R290 refrigerant, which is environmentally friendly and more efficient than R134a/R404a refrigerant

**HDSFVMR-29-1-LE****HDSFVMR-54-2-LE****HDSFVMR-79-3-LE**

MODEL	DOORS	SHELVES	DIMENSIONS	CAPACITY	HP	AMPS	VOLTAGE	PLUG TYPE
HDSFVMR-29-1-LE	1	4	29.5 x 26.4 x 82.2 in 750 x 670 x 2088 mm	16.3 cu.ft. 462 litres	1/4	3.4	115/60/1	NEMA 5-15P
HDSFVMR-54-2-LE	2	8	53.9 x 27.9 x 82.2 in 1370 x 710 x 2088 mm	35.5 cu.ft. 1006 litres	1/3	4.5	115/60/1	NEMA 5-15P
HDSFVMR-79-3-LE	3	12	78.7 x 30.7 x 82.2 in 2000 x 780 x 2088 mm	66.5 cu.ft. 1885 litres	3/7	6.9	115/60/1	NEMA 5-15P



HDSFVMFR-29-1



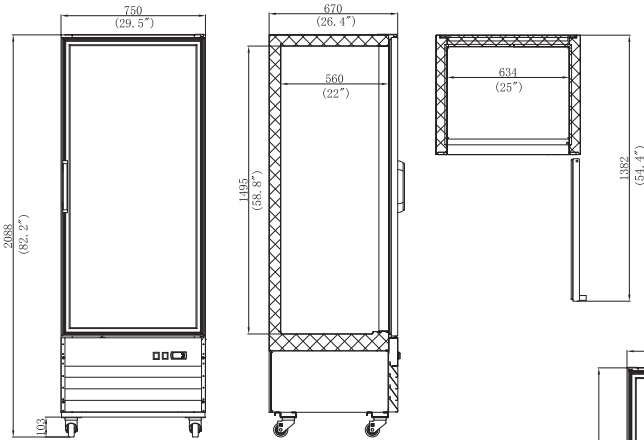
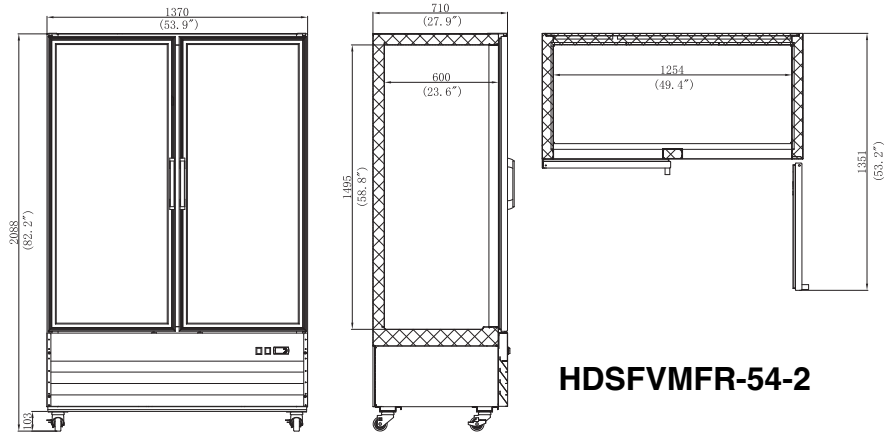
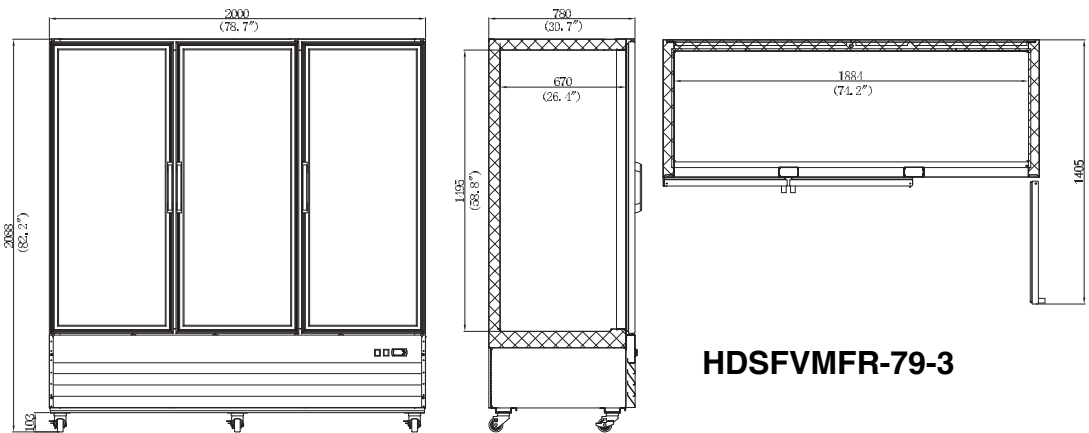
HDSFVMFR-54-2



HDSFVMFR-79-3

STANDARD FEATURES

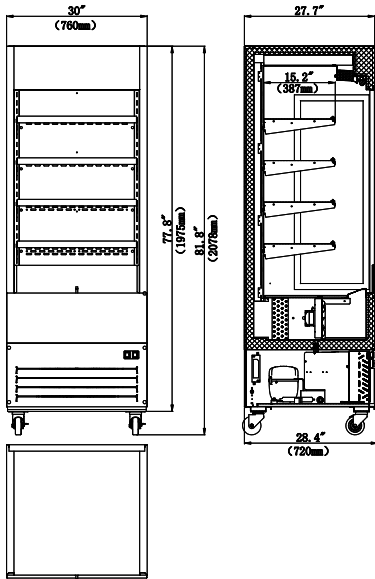
- Exterior: Coated steel. Black or white finish available.
- Interior: Attractive aluminum liner with stainless steel floor.
- Refrigeration system maintains temperatures between 18°F and 25°F (-4°C to -8°C).
- Self-Closing triple pane glass door with positive seal.
- Shelves: Adjustable heavy-duty PVC coated shelves.
- 4" casters.
- LED lighting.
- Electronic control system makes it easy to adjust temperature set point and defrost frequency.
- Slide out refrigeration condensing unit makes it easy to access condenser for cleaning and service.
- These units use HYDROCARBON R290 refrigerant, which is environmentally friendly and more efficient than R134a/R404a refrigerant

**HDSFVMFR-29-1****HDSFVMFR-54-2****HDSFVMFR-79-3**

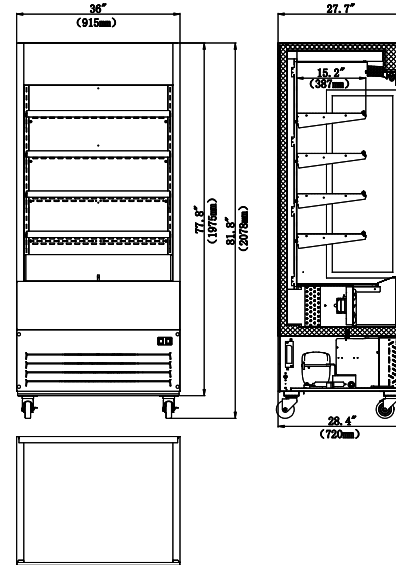
MODEL	DOORS	SHELVES	DIMENSIONS	CAPACITY	HP	AMPS	VOLTAGE	PLUG TYPE
HDSFVMFR-29-1	1	4	29.5 x 26.4 x 82.2 in 750 x 670 x 2088 mm	16.3 cu.ft. 462 litres	1/4	3.4	115/60/1	NEMA 5-15P
HDSFVMFR-54-2	2	8	53.9 x 27.9 x 82.2 in 1370 x 710 x 2088 mm	35.5 cu.ft. 1006 litres	1/3	4.5	115/60/1	NEMA 5-15P
HDSFVMFR-79-3	3	12	78.7 x 30.7 x 82.2 in 2000 x 780 x 2088 mm	66.5 cu.ft. 1885 litres	3/7	6.9	115/60/1	NEMA 5-15P

**HDSOACM-30GE-B****HDSOACM-36GE-B****HDSOACM-48GE-B****HDSOACM-72GE-B****STANDARD FEATURES**

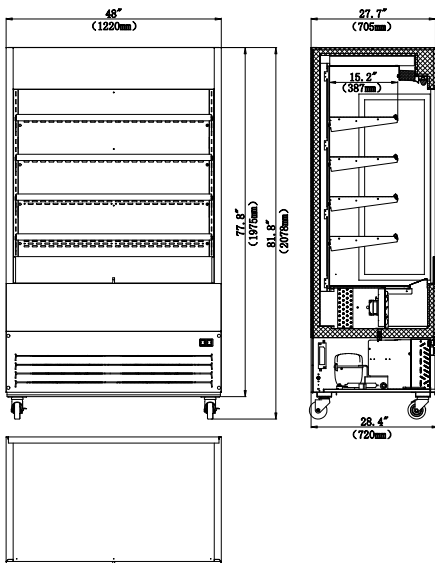
- High capacity, factory balanced refrigeration system that maintains cabinet temperatures of 33°F to 41°F (0.5°C to 5°C) for the best in food preservation.
- Standard back-guard improves airflow.
- LED lighting interior.
- Energy saving night curtain standard.
- Exterior: Black Coated steel. White or stainless steel finish available.
- Glass sides. Solid sides available as well.
- White coated aluminum interior with 300 series stainless steel floor.
- Adjustable galvanized steel shelving.
- Foamed with polyurethane, high-density cell insulation that has zero ozone depletion potential.
- Factory installed condensate pan heater kit available if there is no access to drain plumbing.



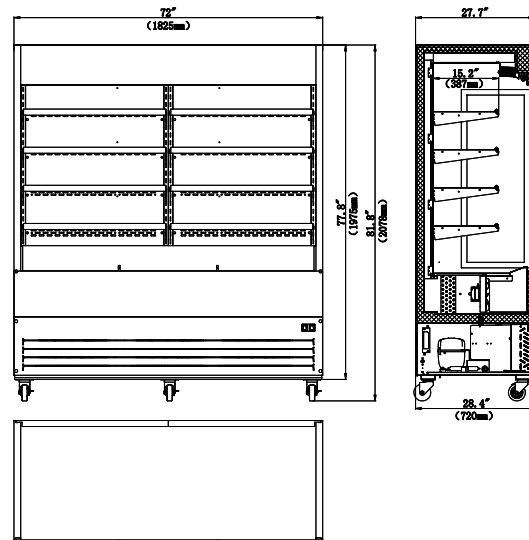
HDSOACM-30GE-B



HDSOACM-36GE-B



HDSOACM-48GE-B



HDSOACM-72GE-B

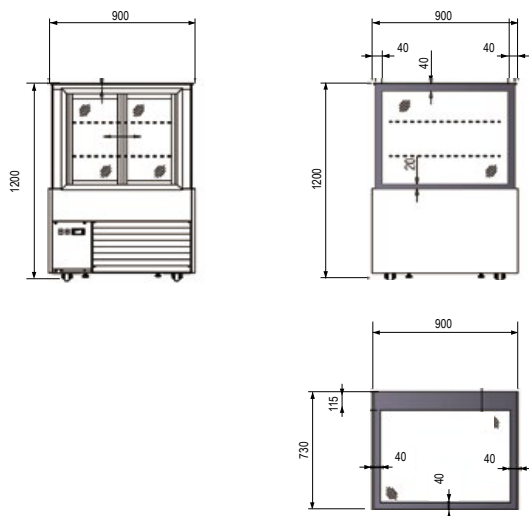
MODEL	SHELVES	DIMENSIONS	CAPACITY	HP	AMPS	VOLTAGE	PLUG TYPE
HDSOACM-30GE-B	4	30" x 28.4" x 82.8 in 760 x 720 x 2104 mm	17.32 cu.ft.	1 - 1/2	11	115/60/1	5-15P
HDSOACM-36GE-B	4	36" x 28.4" x 82.8 in 915 x 720 x 2104 mm	21.27 cu.ft.	1 - 1/2	11	115/60/1	5-15P
HDSOACM-48GE-B	4	48" x 28.4" x 82.8 in 1220 x 720 x 2104 mm	29.04 cu.ft.	2	9.2	208-230/60/1	6-15P
HDSOACM-72GE-B	4	72" x 28.4" x 82.8 in 1825 x 720 x 2104 mm	44.45 cu.ft.	3	14.8	208-230/60/1	5-20P

**HDSRCD35-2****HDSRCD47-2****HDSRCD59-2****HDSRCD70-2**

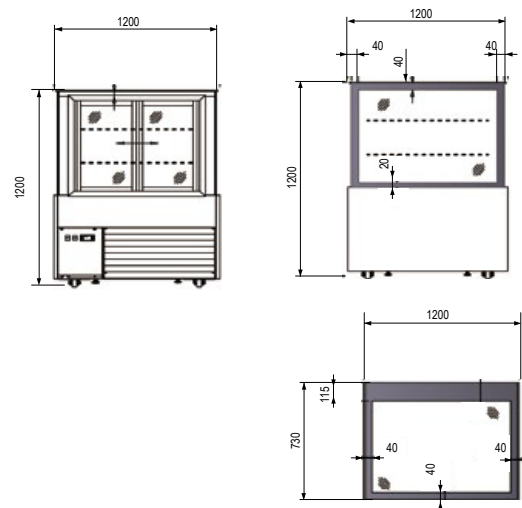
STANDARD FEATURES

- Refrigeration system maintains temperatures between 36°F and 43°F(2°C to 6°C).
- Exterior: Stainless steel floor and walls, standard.
- Sliding doors.
- 12V LED lighting system, safe for users to operate.
- Tempered glass to avoid injury by broken glass. Preinstalled hidden caster design.
- NSF-7 compliant for open food product.
- Shelves: Adjustable glass shelves provide extra large viewing area to maximize bakery product presentation.
- Electronic control system makes it easy to adjust temperature set point and defrost frequency.
- Slide out refrigeration condensing unit makes it easy to access condenser for cleaning and service.
- Option of HYDRO-CARBON R290 refrigerant available.

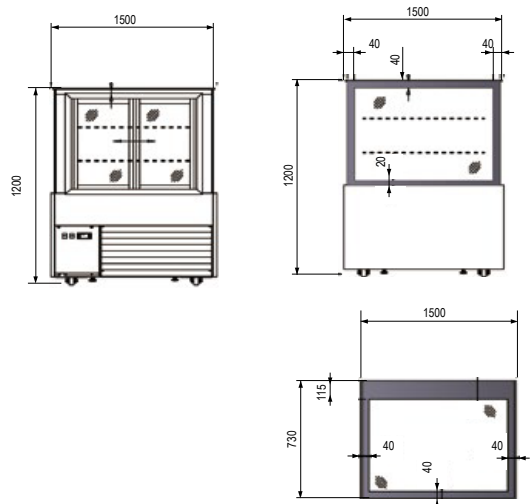
HDSRCD35-2



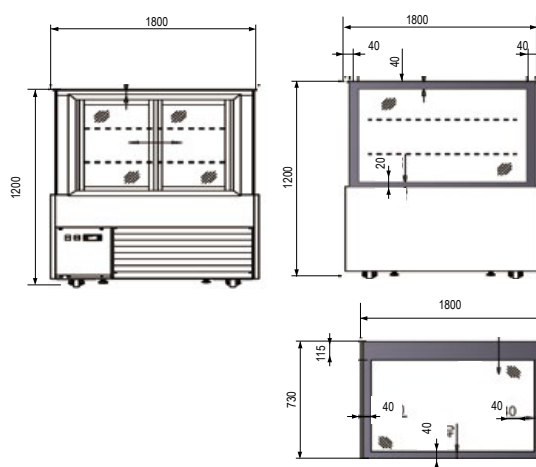
HDSRCD47-2



HDSRCD59-2



HDSRCD70-2

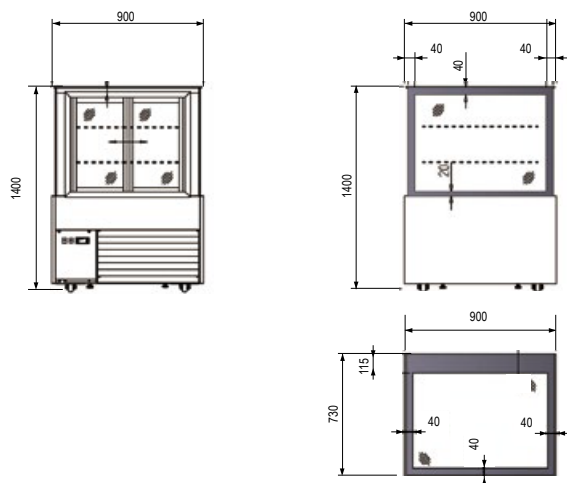


MODEL	DOORS	SHELVES	DIMENSIONS	CAPACITY	HP	AMPS	VOLTAGE	PLUG TYPE
HDSRCD35-2	2	2	35 3/8 × 28 3/4 × 47 1/4 in 900 × 730 × 1200 mm	11.3 cu.ft. 320 liters	1/3+	6.9	115/60/1	NEMA 5-15P
HDSRCD47-2	2	2	47 1/4 × 28 3/4 × 47 1/4 in 1200 × 730 × 1200 mm	14 cu.ft. 400 liters	1/3+	7.2	115/60/1	NEMA 5-15P
HDSRCD59-2	2	2	59 1/8 × 28 3/4 × 47 1/4 in 1500 × 730 × 1200 mm	17.7 cu.ft. 500 liters	1/2+	8.1	115/60/1	NEMA 5-15P
HDSRCD70-2	2	2	70 7/8 × 28 3/4 × 47 1/4 in 1800 × 730 × 1200 mm	21.2 cu.ft. 600 liters	1/2+	8.3	115/60/1	NEMA 5-15P

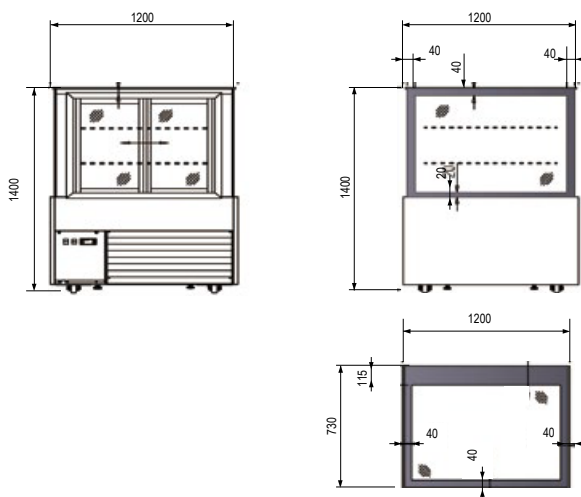
**HDSRCD35-3****HDSRCD47-3****HDSRCD59-3****HDSRCD70-3****STANDARD FEATURES**

- Refrigeration system maintains temperatures between 36°F and 43°F (2°C to 6°C).
- Exterior: Stainless steel floor and walls, standard.
- Sliding doors.
- 12V LED lighting system, safe for users to operate.
- Tempered glass to avoid injury by broken glass. Preinstalled hidden caster design.
- NSF-7 compliant for open food product.
- Shelves: Adjustable glass shelves provide extra large viewing area to maximize bakery product presentation.
- Electronic control system makes it easy to adjust temperature set point and defrost frequency.
- Slide out refrigeration condensing unit makes it easy to access condenser for cleaning and service.
- Option of HYDRO-CARBON R290 refrigerant available.

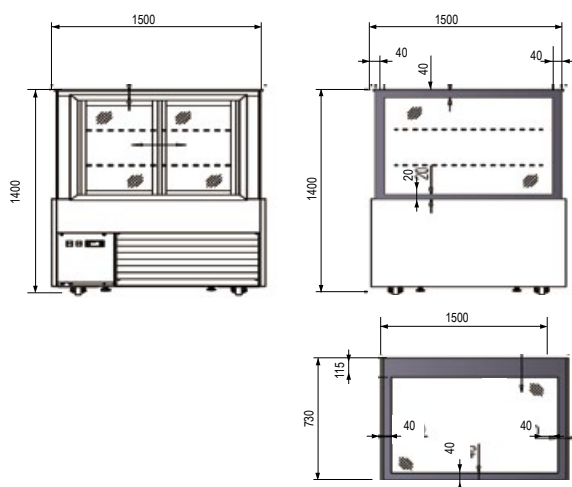
HDSRCD35-3



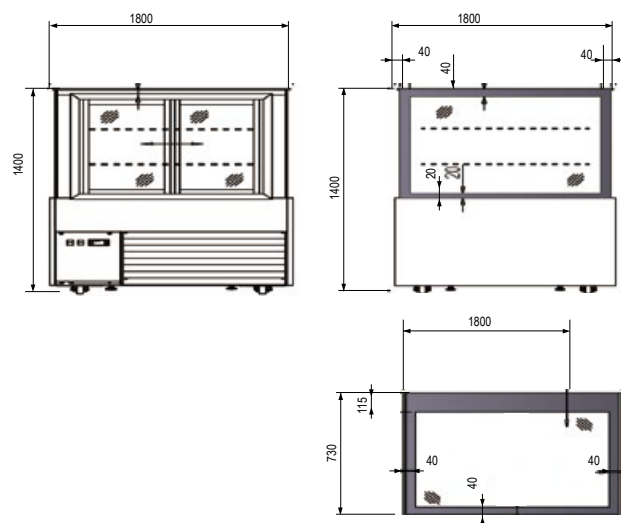
HDSRCD47-3



HDSRCD59-3



HDSRCD70-3

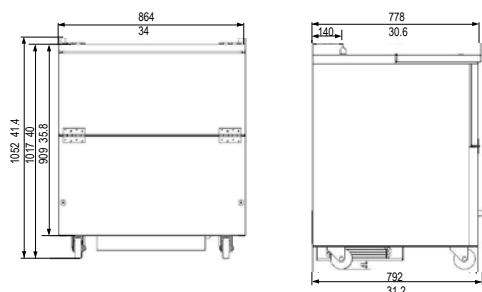


MODEL	DOORS	SHELVES	DIMENSIONS	CAPACITY	HP	AMPS	VOLTAGE	PLUG TYPE
HDSRCD35-3	2	3	35 3/8 × 28 3/4 × 55 1/8 in 900 × 730 × 1400 mm	12.7 cu.ft. 360 liters	1/3+	7.3	115/60/1	NEMA 5-15P
HDSRCD47-3	2	3	47 1/4 × 28 3/4 × 55 1/8 in 1200 × 730 × 1400 mm	19.4 cu.ft. 550 liters	1/3+	7.3	115/60/1	NEMA 5-15P
HDSRCD59-3	2	3	59 1/8 × 28 3/4 × 55 1/8 in 1500 × 730 × 1400 mm	25 cu.ft. 700 liters	1/2+	8.3	115/60/1	NEMA 5-15P
HDSRCD70-3	2	3	70 7/8 × 28 3/4 × 55 1/8 in 1800 × 730 × 1400 mm	30 cu.ft. 850 liters	1/2+	8.5	115/60/1	NEMA 5-15P

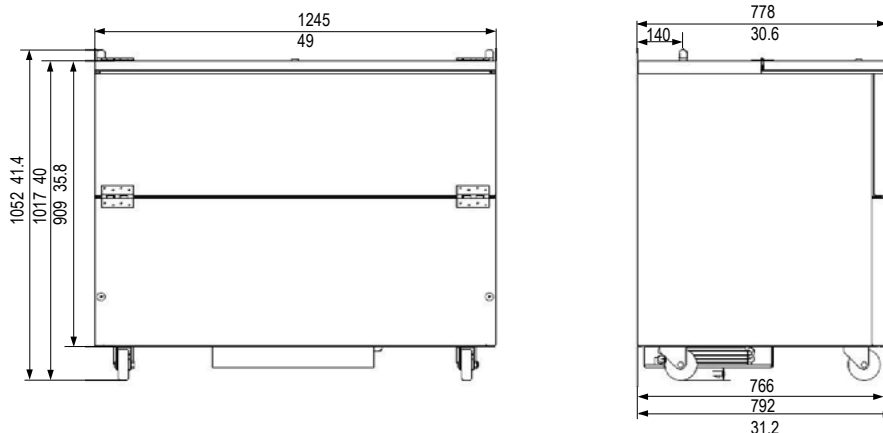
**HDSMC-34****HDSMC-49****HDSMC-58****STANDARD FEATURES**

- Cabinet finish: White-coated steel exterior with stainless steel lid and door with lock and latch. Interior is NSF approved white aluminum liner with stainless steel floor.
- Option of all stainless steel exterior available.
- Heavy duty construction: CFC and HCFC-free foamed-in -place polyurethane insulation.
- Refrigeration system: Single access, cold wall milk coolers maintain milk temperature of 33°F-38°F (0.5°C- 3.3°C).
- Preinstalled 4" heavy-duty casters with brakes.
- Electronic control system makes it easy to adjust temperature set point.
- Bottom floor drain is centrally located for easy cleaning, connecting to drain hose with hose adapter.
- Slide out refrigeration condensing unit makes it easy to access condenser for cleaning and service.
- These units use HYDRO-CARBON R290 refrigerant, which is environmentally friendly and more efficient than R134a/R404a refrigerant.

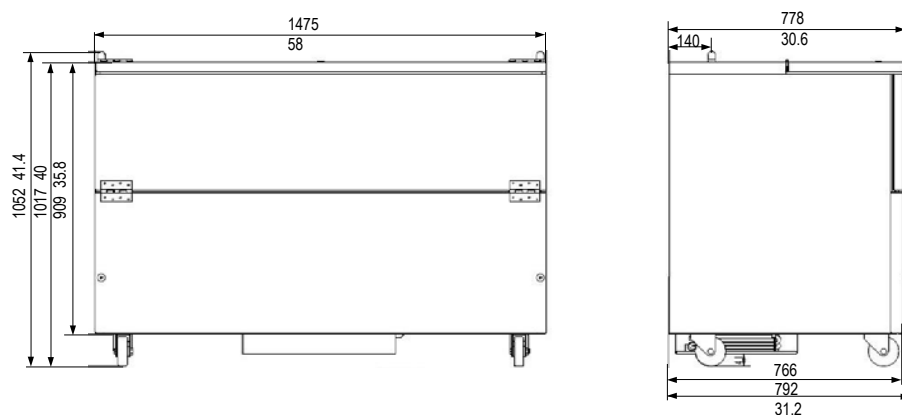
HDSMC-34



HDSMC-49



HDSMC-58

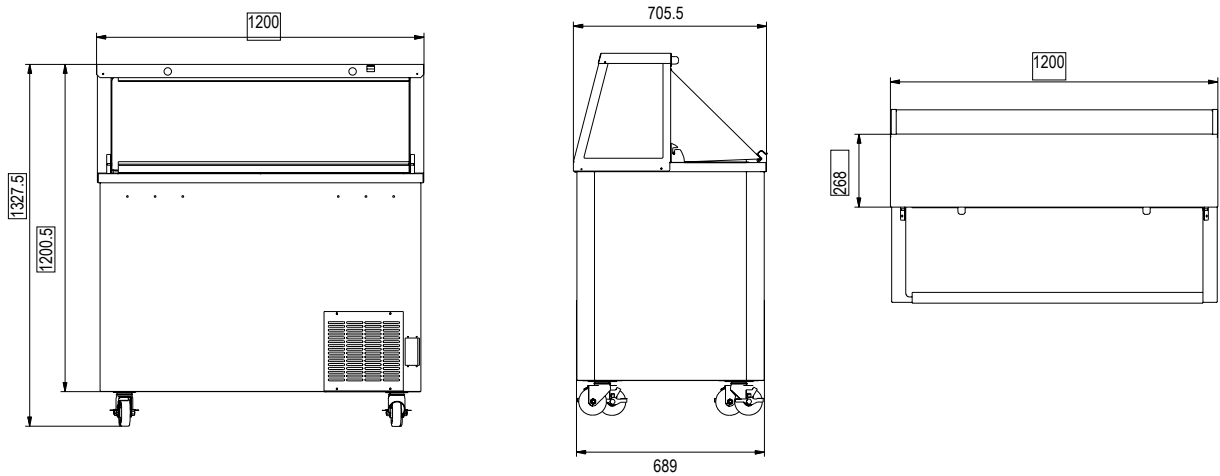


MODEL	LIDS	DIMENSIONS	CAPACITY		HP	AMPS	VOLTAGE	PLUG TYPE
			13"x13"x11"	19"x13"x11"				
HDSMC-34	2	34 × 30 3/5 × 40 in 864 × 778 × 1052 mm	8 cases	4 cases	1/5	2.28	115/60/1	NEMA 5-15P
HDSMC-49	2	49 × 30 3/5 × 40 in 1245 × 778 × 1052 mm	12 cases	8 cases	1/5	2.28	115/60/1	NEMA 5-15P
HDSMC-58	2	58 × 30 3/5 × 40 in 1475 × 778 × 1052 mm	16 cases	10 cases	1/5	2.4	115/60/1	NEMA 5-15P

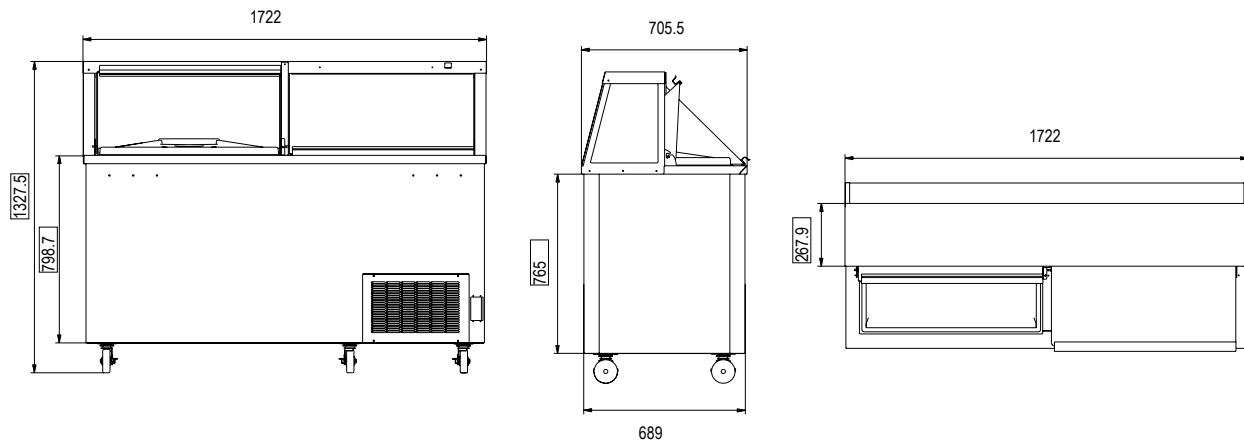
**HDSDPC-47****HDSDPC-68****STANDARD FEATURES**

- Stainless steel top with glass viewing window.
- Bright white painted steel interior and exterior.
- Refrigeration system keeps ice cream at temperatures between -10°F and 5°F (-23°C to -15°C).
- Transparent lids hinged with a full length handle.
- Plastic can holder for each container rack.
- LED lighting.
- Electronic control system makes it easy to adjust temperature set point and defrost frequency.
- Slide out refrigeration condensing unit makes it easy to access condenser for cleaning and service.
- These units use HYDRO-CARBON R290 refrigerant, which is environmentally friendly and more efficient than R134a/R404a refrigerant.

HDSDPC-47



HDSDPC-68



MODEL	DOORS	SHELVES	DIMENSIONS	CAPACITY	HP	AMPS	VOLTAGE	PLUG TYPE
HDSDPC-47	1	8	47 x 27 3/4 x 51 1/8 in 1195 x 705 x 1300 mm	8 cu.ft. 4 liters	1/4+	5.16	115/60/1	NEMA 5-15P
HDSDPC-68	2	12	67 3/4 x 27 3/4 x 51 1/8 in 1720 x 705 x 1300 mm	12 cu.ft. 8 liters	1/2+	5.64	115/60/1	NEMA 5-15P

sales@heavydutysystems.com

Voltage 220/50/1 available.



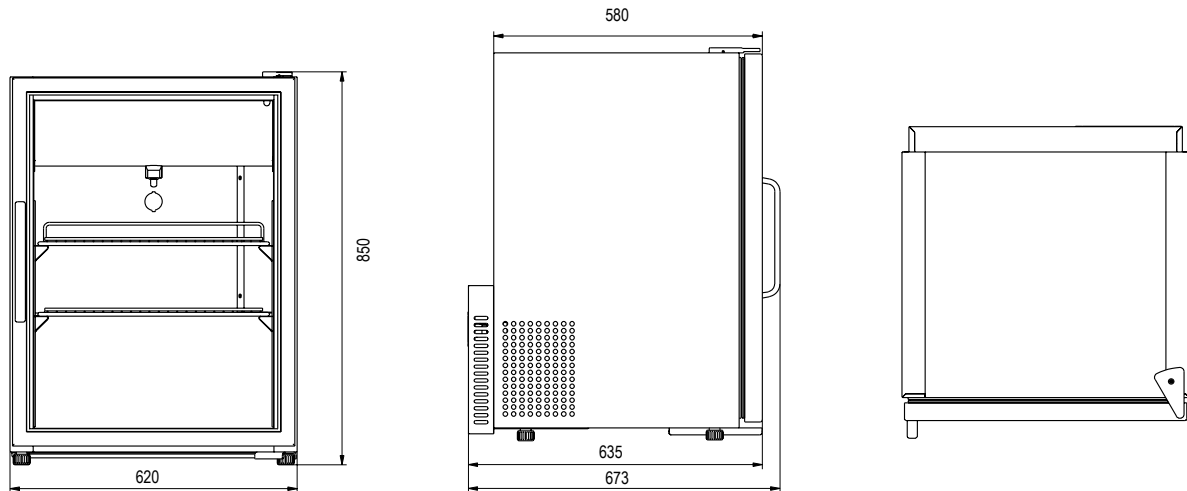
Designed In USA.

PERFORMANCE. DURABILITY. VALUE.

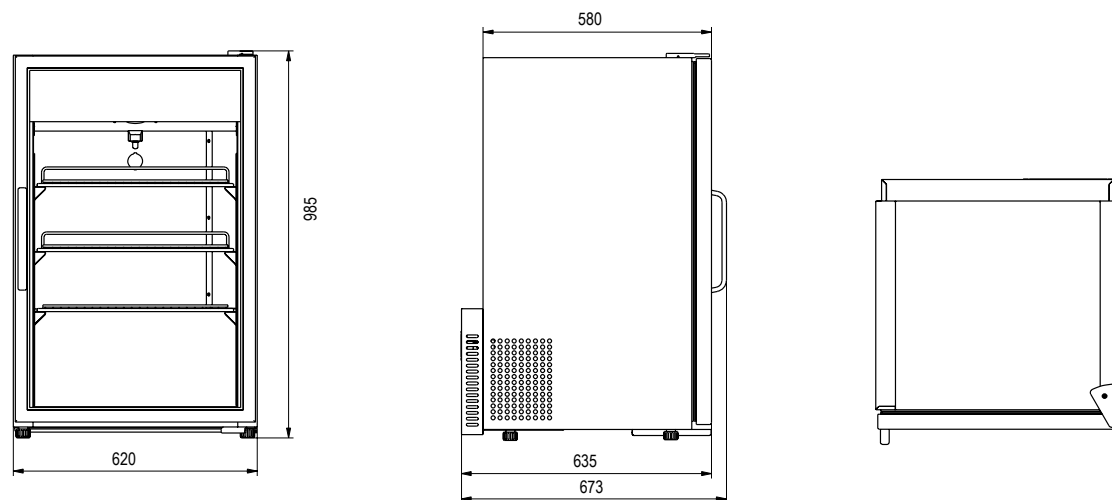
**HDSRCM-24-LE****HDSRCM-24H-LE****STANDARD FEATURES**

- Exterior: Coated steel. Black or white or S/S finish available.
- Anti-Fogging Low E Glass
- Interior : Attractive aluminum liner with stainless steel floor.
- Refrigeration system: maintains temperatures between 33°F and 41°F (0.5°C to 5°C).
- Swing glass door.
- Shelves: Adjustable heavy-duty PVC coated shelves.
- LED lighting.
- Electronic control system makes it easy to adjust temperature set point and defrost frequency.
- R290 natural refrigerant.
- Slide out refrigeration condensing unit makes it easy to access condenser for cleaning and service.

HDSRCM-24



HDSRCM-24H



MODEL	DOORS	SHELVES	DIMENSIONS	CAPACITY	HP	AMPS	VOLTAGE	PLUG TYPE
HDSRCM-24-LE	1	2	24 2/5 x 25 1/5 x 33 1/4 in 620 x 640 x 845 mm	5 cu.ft. 140 liters	1/5	1.8	115/60/1	NEMA 5-15P
HDSRCM-24H-LE	1	3	24 2/5 x 25 1/5 x 38 3/5 in 620 x 640 x 980 mm	6.4 cu.ft. 180 liters	1/5	2	115/60/1	NEMA 5-15P

sales@heavydutysystems.com

Voltage 220/50/1 available.



Designed In USA.

PERFORMANCE. DURABILITY. VALUE.

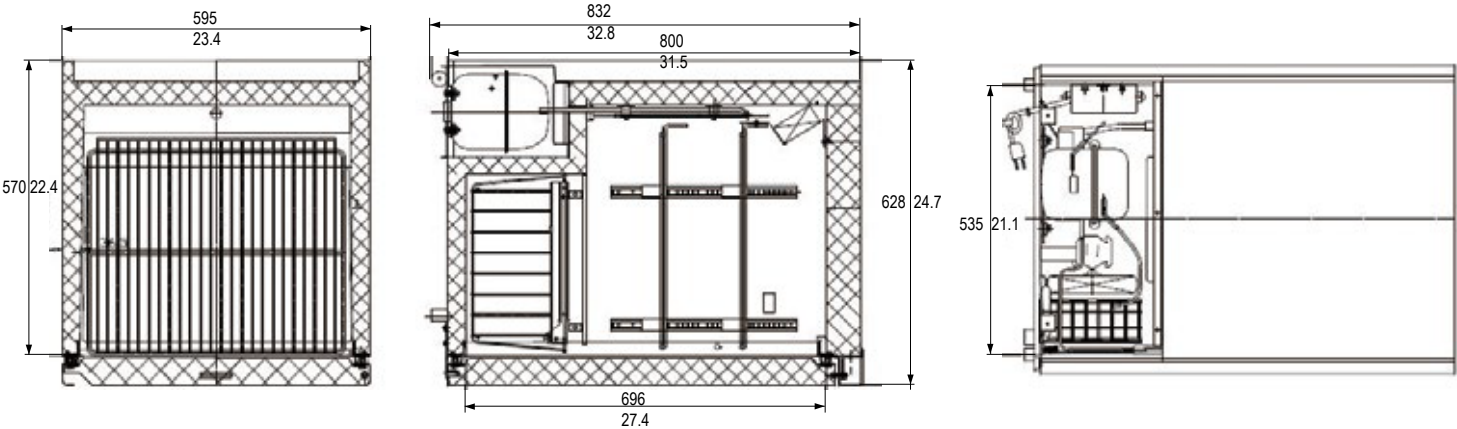
**HDSOR-23****STANDARD FEATURES**

- Stainless steel interior and exterior.
- Option of bright white aluminum interior available.
- Refrigeration system keeps food at safe temperatures between 33°F and 41°F (0.5°C to 5°C).
- Stainless steel heavy-duty door with enduring quality. Locks and keys included.
- Simple installation with no plumbing required.
- Electronic control system makes it easy to adjust temperature set point and defrost frequency.
- Preinstalled heavy-duty casters.
- GN1/1 pan is suitable.
- Shelves: Adjustable heavy-duty PVC coated shelves.





HDSOR-23



MODEL	DOORS	SHELVES	DIMENSIONS	CAPACITY	HP	AMPS	VOLTAGE	PLUG TYPE
HDSOR-23	1	2	23 2/5 x 24 3/4 x 32 3/4 in 595 x 628 x 830 mm	5.7 cu.ft. 161 liters	1/6	2.2	115/60/1	NEMA 5-15P

sales@heavydutysystems.com

Voltage 220/50/1 available.





PERFORMANCE. DURABILITY. VALUE.

sales@heavydutysystems.com

www.heavydutysystems.com